

Recombinant mouse IFN-beta 1/IFNB1 protein

Catalog Number: ATGP0317

PRODUCT INFORMATION

Expression system

E.coli

Domain

22-182aa

UniProt No.

P01575

NCBI Accession No.

NP_034640.1

Alternative Names

Ifb, IFN-beta, IFNB, Interferon beta 1, Interferon beta, Fibroblast interferon

PRODUCT SPECIFICATION

Molecular Weight

22.0 kDa (182aa) confirmed by MALDI-TOF

Concentration

0.25mg/ml (determined by Bradford assay)

Formulation

Liquid in. 20mM HEPES buffer (pH 6.0) containing 0.5M NaCl, 10% glycerol

Purity

> 95% by SDS-PAGE

Endotoxin level

< 1 EU per 1ug of protein (determined by LAL method)

Tag

His-Tag

Application

SDS-PAGE

Storage Condition

Can be stored at +2C to +8C for 1 week. For long term storage, aliquot and store at -20C to -80C. Avoid repeated freezing and thawing cycles.

BACKGROUND

Description

Interferon beta 1, also known as IFN-beta, is produced mainly by fibroblasts and some epithelial cell types. IFN-beta is involved in the regulation of unspecific humoral immune responses and immune responses against viral infections. It also increases the expression of HLA class I antigens and blocks the expression of HLA class II antigens stimulated by IFN-gamma. Interferon beta 1 can be used for topic treatment of condylomata

Recombinant mouse IFN-beta 1/IFNB1 protein

Catalog Number: ATGP0317

acuminata. Some studies suggest that Interferon beta 1 tends to prevent disease activity in patients with multiple sclerosis. Recombinant Interferon beta 1 protein was expressed in E. coli and purified by using conventional chromatography techniques.

Amino acid Sequence

<MGSSHHHHHH SSGLVPRGSH M>INYKQLQLQ ERTNIRKCQE LLEQLNGKIN LTYRADFKIP MEMTEKMQKS
YTAFAIQEML QNVFLVFRNN FSSTGWNETH VVRLLELHQ QTVFLKTVLE EKQEERLTWE MSSTALHLKS YYWRVQRYLK
LMKYNSYAWM VVRAEIFRNF LIIRRLTRNF QN

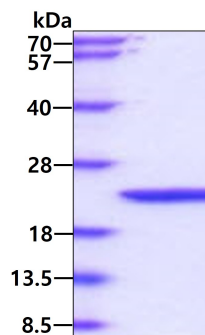
General References

Fierlbeck G, et al. (1992) Hautarzt. 43(1):16-21.

Panitch HS. (1992) Drugs. 44(6):946-62.

DATA

SDS-PAGE



3ug by SDS-PAGE under reducing condition and visualized by coomassie blue stain.