

Human CD158b2/KIR2DL3 antibody

Catalog Number: AKR3006

PRODUCT INFORMATION

Catalog number

AKR3006

Clone No.

190IIC311

Product type

Monoclonal Antibody

UnitProt No.

P43628

NCBI Accession No.

NP_055326

Alternative Names

Killer cell immunoglobulin like receptor, Two Ig domains and long cytoplasmic tail 3, Killer cell immunoglobulin-like receptor 2DL3, CD158 antigen-like family member B2, KIR-023GB, Killer inhibitory receptor cl 2-3, NKAT2a, NKAT2b, Natural killer-associated transcript 2, NKAT-2, p58 natural killer cell receptor clone CL-6, p58 NK receptor CL-6, p58.2 MHC class-I-specific NK receptor, CD158B2, KIRCL23, p58

PRODUCT SPECIFICATION

Antibody Host

Mouse

Reacts With

Human

Concentration

1mg/ml (determined by BCA assay)

Formulation

Liquid in. Phosphate-Buffered Saline (pH 7.4) with 0.02% Sodium Azide, 10% glycerol

Immunogen

Recombinant human KIR2DL3 (19-161aa) purified from E. coli

Isotype

IgG2a kappa

Purification Note

By protein-G affinity chromatography

Application

ELISA, WB, ICC/IF

Usage

The antibody has been tested by ELISA, Western blot and ICC/IF analysis to assure specificity and reactivity. Since application varies, however, each investigation should be titrated by the reagent to obtain optimal results.

Human CD158b2/KIR2DL3 antibody

Catalog Number: AKR3006

Storage

Can be stored at +2C to +8C for 1 week. For long term storage, aliquot and store at -20C to -80C. Avoid repeated freezing and thawing cycles.

BACKGROUND

Description

Reacts with extracellular domain of the KIR2DL3, a member of the Killer cell immunoglobulin-like receptor(KIR) family. The KIR family consists of transmembrane glycoproteins of the Ig superfamily expressed on human NK cells and a subset of human T cells which they are involved in recognition of either MHC class I molecules or unknown ligand on target cells and inhibit cytotoxic activities.

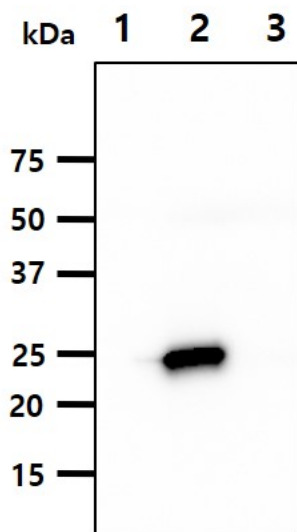
General References

Shin JS, et al., (1999) Hybridoma 18:521-527.

Chwaee YJ, et al., (2002) J Immunology 169:3726-3735.

DATA

Western blot analysis (WB)

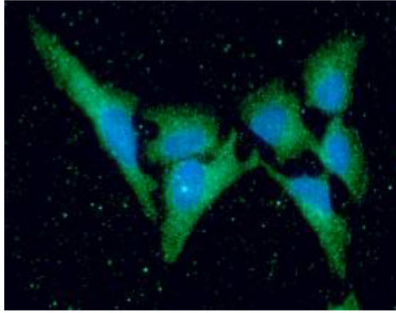


The recombinant proteins (50ng) were resolved by SDS-PAGE, transferred to PVDF membrane and probed with anti-human KIR2DL3 antibody (1:1000). Proteins were visualized using a goat anti-mouse secondary antibody conjugated to HRP and an ECL detection system.
Lane 1.: KIR2DL1 recombinant protein
Lane 2.: KIR2DL3 recombinant protein
Lane 3.: KIR2DS4 recombinant protein

Immunocytochemistry/Immunofluorescence (ICC/IF)

Human CD158b2/KIR2DL3 antibody

Catalog Number: AKR3006



ICC/IF analysis of KIR2DL3 in HeLa cells. The cell was stained with AKR3006 (1:100). The secondary antibody (green) was used Alexa Fluor 488. DAPI was stained the cell nucleus (blue).