

# Human KIR2DL1/KIR2DL3/KIR2DL4 antibody

Catalog Number: AKR0501

## PRODUCT INFORMATION

---

**Catalog number**

AKR0501

**Clone No.**

2H6

**Product type**

Monoclonal Antibody

**UnitProt No.**

Q99706

**NCBI Accession No.**

NP\_002246

**Alternative Names**

KIR2D domain, NKAT2a antibody, NKAT2b antibody, CD158a antigen antibody, CD158b antigen antibody, CD158D antibody, CD158I antibody, G9P antibody, Killer cell Ig like receptors antibody, Killer cell immunoglobulin like receptor 2DL1 antibody, Killer cell immunoglobulin like receptor 2DL3 antibody, Killer cell immunoglobulin like receptor two domains long cytoplasmic tail 4 antibody, Killer cell immunoglobulin like receptors antibody, Killer cell immunoglobulin-like receptor 2DL4 antibody, Killer cell inhibitory receptor 103AS antibody, KIR 103AS antibody, KKA3 antibody, MHC class I NK cell receptor antibody, MHC class I NK cell receptor KIR103AS antibody, Natural killer cell inhibitory receptor antibody, NKAT antibody, NKAT1 antibody, NKAT2 antibody, NKAT8 antibody, p58 NK receptor antibody

## PRODUCT SPECIFICATION

---

**Antibody Host**

Mouse

**Reacts With**

Human

**Concentration**

1mg/ml (determined by BCA assay)

**Formulation**

Liquid in. Phosphate-Buffered Saline (pH 7.4) with 0.02% Sodium Azide, 10% glycerol

**Immunogen**

Recombinant human KIR2DL4 (44-202aa) purified from E. coli

**Isotype**

IgG2b kappa

**Purification Note**

By protein-G affinity chromatography

**Application**

ELISA, WB

# Human KIR2DL1/KIR2DL3/KIR2DL4 antibody

Catalog Number: AKR0501

## Usage

The antibody has been tested by ELISA and Western blot analysis to assure specificity and reactivity. Since application varies, however, each investigation should be titrated by the reagent to obtain optimal results.

## Storage

Can be stored at +2C to +8C for 1 week. For long term storage, aliquot and store at -20C to -80C. Avoid repeated freezing and thawing cycles.

## BACKGROUND

### Description

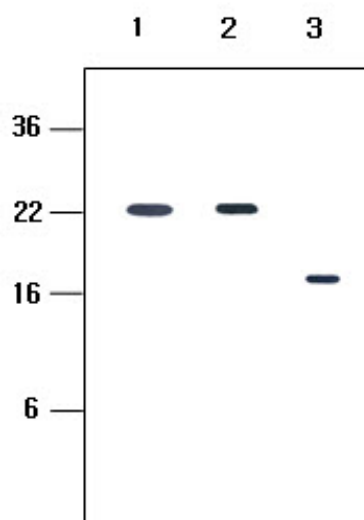
The kIR family consists of transmembrane glycoproteins of the Ig superfamily expressed on human Nk cells and a subset of human T cells which they are involved in recognition of either MHC class I molecules or unknown ligand on target cells and inhibit cytotoxic activities.

### General References

Shin JS et al., 1999. Hybridoma 18:521-527.  
Chwaee YJ et al., J Immunology 169:3726-3735.

## DATA

### Western blot analysis (WB)



The recombinant proteins (20ng) were resolved by SDS-PAGE, transferred to PVDF membrane and probed with anti-human kIR2D (1:500). Proteins were visualized using a goat anti-mouse secondary antibody conjugated to HRP and a ECL detection system.  
Lane 1.: Recombinant human kIR2DL1 protein (23-223aa)  
Lane 2.: Recombinant human kIR2DL3 protein (23-223aa)  
Lane 3.: Recombinant human kIR2DL4 protein (44-202aa)