

Human CEBP beta/CEBPB antibody

Catalog Number: ABP0609

PRODUCT INFORMATION

Catalog number

ABP0609

Clone No.

47A1

Product type

Monoclonal Antibody

UnitProt No.

P17676

NCBI Accession No.

NP_005185

Alternative Names

CCAAT/enhancer-binding protein beta, Liver activator protein, LAP, liver-enriched transcriptional activator protein, Liver-enriched inhibitory protein, LIP, Nuclear factor NF-IL6, NFIL6, Transcription factor 5, TCF-5, Interleukin 6-dependent DNA-binding protein, IL6DBP, CRP2

PRODUCT SPECIFICATION

Antibody Host

Mouse

Reacts With

Human

Concentration

1mg/ml (determined by BCA assay)

Formulation

Liquid in. Phosphate-Buffered Saline (pH 7.4) with 0.02% Sodium Azide, 10% glycerol

Immunogen

Recombinant human C/EBP-beta (1-271 aa) purified from E. coli

Isotype

IgG1 kappa

Purification Note

By protein-G affinity chromatography

Application

ELISA, WB, ICC/IF

Usage

The antibody has been tested by ELISA, Western blot and ICC/IF analysis to assure specificity and reactivity. Since application varies, however, each investigation should be titrated by the reagent to obtain optimal results.

Human CEBP beta/CEBPB antibody

Catalog Number: ABP0609

Storage

Can be stored at +2C to +8C for 1 week. For long term storage, aliquot and store at -20C to -80C. Avoid repeated freezing and thawing cycles.

BACKGROUND

Description

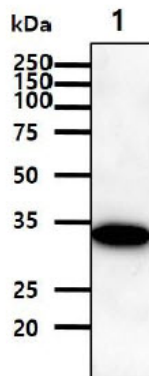
CCAAT/enhancer-binding proteins (C/EBPs) are a family of basic leucine zipper (bZIP) DNA binding proteins that play important roles in normal cellular differentiation and function in a variety of tissues. The C/EBP family is critical for innate immunity and inflammatory response, and consists of five core members: C/EBPalpha, C/EBPbeta, C/EBPdelta, C/EBPepsilon, and C/EBPgamma. Among these proteins, C/EBPbeta is usually highly expressed in liver, intestine, lung and adipose. C/EBPbeta has three isoforms, two activator, (LAP* and LAP) and a repressor (LIP). These isoforms are differentially translated from the same mRNA. The expression of these isoforms is developmentally and hormonally regulated.

General References

- Lekstrom-Himes J. et al. (1998) J Biol. Chem. 273, 28545-28548.
Parkin SE. et al. (2002) J Biol. Chem. 277:23563-23572.
Su WC. et al. (2003) J Biol. Chem. 278, 51150-51158.

DATA

Western blot analysis (WB)

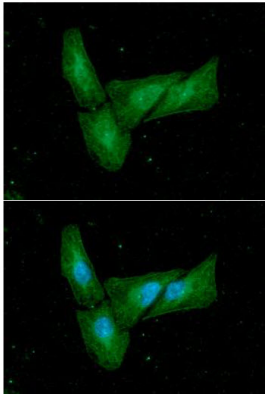


The cell lysate (40ug) was resolved by SDS-PAGE, transferred to PVDF membrane and probed with anti-human C/EBP-beta antibody (1:1000). Proteins were visualized using a goat anti-mouse secondary antibody conjugated to HRP and an ECL detection system.
Lane 1.: 293T cell lysate

Immunocytochemistry/Immunofluorescence (ICC/IF)

Human CEBP beta/CEBPB antibody

Catalog Number: ABP0609



ICC/IF analysis of C/EBP-beta in HaLa cells. The cell was stained with ABP0609 (1:100). The secondary antibody (green) was used Alexa Fluor 488. DAPI was stained the cell nucleus (blue).