

Human LYVE-1 antibody

Catalog Number: AXL0610

PRODUCT INFORMATION

Catalog number

AXL0610

Clone No.

4G1

Product type

Monoclonal Antibody

UnitProt No.

Q9Y5Y7

NCBI Accession No.

NP_006682

Alternative Names

XLkD1(extracellular link domain containing 1), HAR, LYVE-1, CRSBP-1, lymphatic vessel endothelial hyaluronan receptor 1, extracellular link domain containing 1,

PRODUCT SPECIFICATION

Antibody Host

Mouse

Reacts With

Human

Concentration

1mg/ml (determined by BCA assay)

Formulation

Liquid in. Phosphate-Buffered Saline (pH 7.4) with 0.02% Sodium Azide, 10% glycerol

Immunogen

Recombinant human LYVE-1 (25-235 aa) purified from E. coli

Isotype

IgG2b kappa

Purification Note

By protein-G affinity chromatography

Application

ELISA, WB, ICC/IF

Usage

The antibody has been tested by ELISA, Western blot and ICC/IF analysis to assure specificity and reactivity. Since application varies, however, each investigation should be titrated by the reagent to obtain optimal results.

Human LYVE-1 antibody

Catalog Number: AXL0610

Storage

Can be stored at +2C to +8C for 1 week. For long term storage, aliquot and store at -20C to -80C. Avoid repeated freezing and thawing cycles.

BACKGROUND

Description

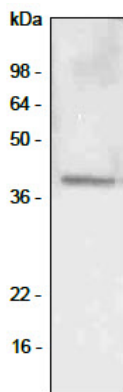
Lymphatic vascular endothelial hyaluronan receptor-1 (LYVE-1), a selective marker of the lymphatic endothelium, is a surface endocytic receptor for hyaluronan (HA), which is an extracellular glycosaminoglycan involved in cell adhesion and migration. HA is widely expressed on leukocytes, dendritic cells, and tumor cell, and is identified by searching expressed sequence tag (EST) databases for sequences homologous (41%) with the metastasis related CD44 molecules.

General References

- Koukourakis MI. et al. (2006) J. Clin. Pathol. 58, 202-206.
- Chen L. et al. (2005) Invest. Ophthalmol Vis. Sci. 46, 4536-4540.
- Banerji S. et al. (1999) J. Cell Biol. 144, 789-801.

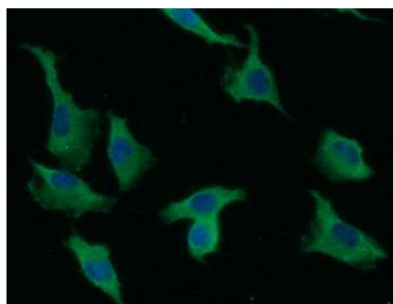
DATA

Western blot analysis (WB)



A549 (lung carcinoma) cell lysate(40ug) was resolved by SDS-PAGE, transferred to PVDF membrane and probed with anti-human LYVE-1 antibody (1:500). Proteins were visualized using a goat anti-mouse secondary antibody conjugated to HRP and an ECL detection system.

Immunocytochemistry/Immunofluorescence (ICC/IF)



ICC/IF analysis of LYVE-1 in A549 cells. The cell was stained with AXL0610 (1:100). The secondary antibody (green) was used Alexa Fluor 488. DAPI was stained the cell nucleus (blue).