

Human BMP-7 antibody

Catalog Number: ABM0615

PRODUCT INFORMATION

Catalog number

ABM0615

Clone No.

4E7

Product type

Monoclonal Antibody

UnitProt No.

P18075

NCBI Accession No.

NP_001710

Alternative Names

BMP 7, Bone morphogenetic protein 7, Eptotermin alfa, OP-1, Osteogenic protein 1

PRODUCT SPECIFICATION

Antibody Host

Mouse

Reacts With

Human

Concentration

1mg/ml (determined by BCA assay)

Formulation

Liquid in. Phosphate-Buffered Saline (pH 7.4) with 0.02% Sodium Azide, 10% glycerol

Immunogen

Recombinant human BMP7 (293-431aa) purified from E. coli

Isotype

IgG1 kappa

Purification Note

By protein-G affinity chromatography

Application

ELISA, WB, ICC/IF

Usage

The antibody has been tested by ELISA, Western blot and ICC/IF analysis to assure specificity and reactivity. Since application varies, however, each investigation should be titrated by the reagent to obtain optimal results.

Storage

Human BMP-7 antibody

Catalog Number: ABM0615

Can be stored at +2C to +8C for 1 week. For long term storage, aliquot and store at -20C to -80C. Avoid repeated freezing and thawing cycles.

BACKGROUND

Description

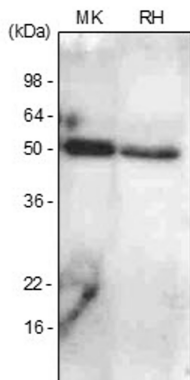
BMP-7 (bone morphogenetic protein-7), also known as OP-1 (osteogenic protein-1), is a member of the transforming growth factorbeta (TGFbeta) superfamily. BMP-7 plays an essential role during ontogeny of the mammalian eye and kidney, also, is expressed in heart, lung, small intestine, limb bud and teeth. In addition, noggin, one of the soluble BMP antagonists, regulated the action of BMPs on mesenchymal precursor cells, partially through a feedback type of inhibition.

General References

- Gregory KE., et al. (2005) J. Biol. Chem. 280, 27970-27980.
- Sampath Tk., et al. (1990) J. Biol. Chem. 265:13198-13205.
- Godin RE., et al. (1998) Development. 125:3473-3482.
- Groppe J., et al. (2002) Nature. 420:636-642.

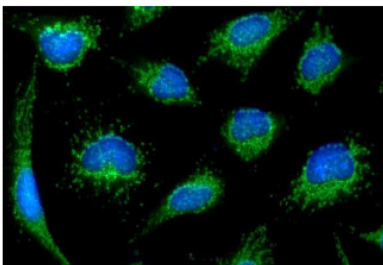
DATA

Western blot analysis (WB)



The extracts of mouse kidney (MK) and rat heart (RH) were resolved by SDS-PAGE, transferred to PVDF membrane and probed with anti-human BMP7 antibody (1:1,000). Protein was visualized using a goat anti-mouse secondary antibody conjugated to HRP and an ECL detection system.

Immunocytochemistry/Immunofluorescence (ICC/IF)



ICC/IF analysis of BMP7 in HeLa cells. The cell was stained with ABM0615 (1:100). The secondary antibody (green) was used Alexa Fluor 488. DAPI was stained the cell nucleus (blue).