

Human Crystallin alpha B/CRYAB antibody

Catalog Number: ACB0617

PRODUCT INFORMATION

Catalog number

ACB0617

Clone No.

2E8.

Product type

Monoclonal Antibody

UnitProt No.

P02511

NCBI Accession No.

NP_001876.1

Alternative Names

Crya2, Crya-2, Cryab, Crystallin alpha B, Alpha-crystallin B chain, Heat shock protein beta-5, HspB5, Renal carcinoma antigen NY-REN-27, Rosenthal fiber component

PRODUCT SPECIFICATION

Antibody Host

Mouse

Reacts With

Human

Concentration

1mg/ml (determined by BCA assay)

Formulation

Liquid in. Phosphate-Buffered Saline (pH 7.4) with 0.02% Sodium Azide, 10% glycerol

Immunogen

Recombinant human Crystallin alpha B (1-175 aa) purified from E. coli

Isotype

IgG2b kappa

Purification Note

By protein-G affinity chromatography

Application

ELISA, WB, ICC/IF

Usage

The antibody has been tested by ELISA, Western blot and ICC/IF analysis to assure specificity and reactivity. Since application varies, however, each investigation should be titrated by the reagent to obtain optimal results.

Human Crystallin alpha B/CRYAB antibody

Catalog Number: ACB0617

Storage

Can be stored at +2C to +8C for 1 week. For long term storage, aliquot and store at -20C to -80C. Avoid repeated freezing and thawing cycles.

BACKGROUND

Description

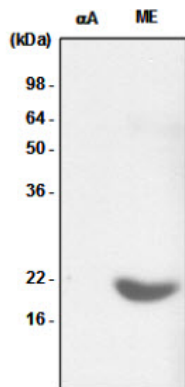
alpha-Crystallins are composed of two gene products; alpha-Crystallin A and B, for acidic and basic, respectively. alpha-Crystallins can be induced by heat shock and are members of the small heat shock protein (sHSP also known as the HSP20). They act as molecular chaperones and hold them in large soluble aggregates. These heterogeneous aggregates consist of 30-40 subunits; the alpha-Crystallin A and B subunits have a 3:1 ratio, respectively. Two additional functions of alpha-crystallins are an autokinase activity and participation in the intracellular architecture. alpha-Crystallin B is expressed widely in many tissues and organs and occurs in many neurological diseases.

General References

- Hasan, A., et al. (2002) *Biochemistry* 41(52) 15876-15882.
Kamradt, M.C., et al (2002) *J. Biol. Chem.* 277(41) 38731-38736.
Reddy, G.B., et al (2002) *FEBS lett.* 522(1-3) 59-64.
Ito, H., et al (2002) *J. Biochem.* 131(4) 593-603.

DATA

Western blot analysis (WB)

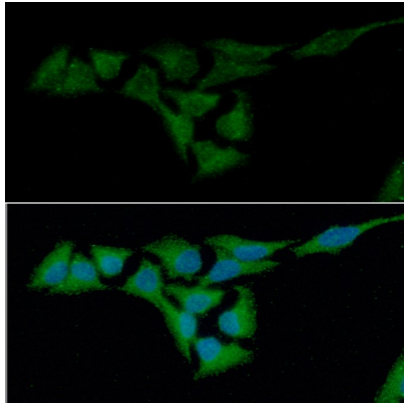


The recombinant protein (50ng) of crystallin alpha A (alphaA) and the tissue lysates (40ug) of mouse eye (ME) were resolved by SDS-PAGE, transferred to PVDF membrane and probed with anti-human crystallin alpha B antibody (1:1,000). Proteins were visualized using a goat anti-mouse secondary antibody conjugated to HRP and an ECL detection system.

Immunocytochemistry/Immunofluorescence (ICC/IF)

Human Crystallin alpha B/CRYAB antibody

Catalog Number: ACB0617



ICC/IF analysis of Crystallin alpha B in HeLa cells. The cell was stained with ACB0617 (1:100). The secondary antibody (green) was used Alexa Fluor 488. DAPI was stained the cell nucleus (blue).