

Human Geminin antibody

Catalog Number: AGM0621

PRODUCT INFORMATION

Catalog number

AGM0621

Clone No.

2H7

Product type

Monoclonal Antibody

UnitProt No.

O75496

NCBI Accession No.

NP_056979

Alternative Names

GMNN, Geminin, Geminin, DNA replication inhibitor, Gem, Geminin DNA replication inhibitor, OTTHuMP00000039393, RP3 369A17.3

PRODUCT SPECIFICATION

Antibody Host

Mouse

Reacts With

Human

Concentration

1mg/ml (determined by BCA assay)

Formulation

Liquid in. Phosphate-Buffered Saline (pH 7.4) with 0.02% Sodium Azide, 10% glycerol

Immunogen

Recombinant human Geminin (1-209 aa) purified from E. coli

Isotype

IgG1 kappa

Purification Note

By protein-G affinity chromatography

Application

ELISA, WB

Usage

The antibody has been tested by ELISA and Western blot analysis to assure specificity and reactivity. Since application varies, however, each investigation should be titrated by the reagent to obtain optimal results.

Human Geminin antibody

Catalog Number: AGM0621

Storage

Can be stored at +2C to +8C for 1 week. For long term storage, aliquot and store at -20C to -80C. Avoid repeated freezing and thawing cycles.

BACKGROUND

Description

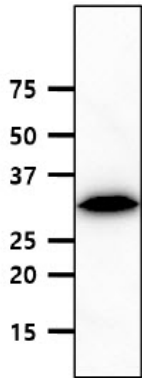
Geminin is a 25 kDa protein, which inhibits DNA replication and is degraded during the mitotic phase of the cell cycle. Geminin controls replication by binding to the licensing factor Cdt1, and is involved in neural differentiation. In addition, geminin directly interacts with Six3 and Hox homeodomain proteins during embryogenesis and inhibits their functions.

General References

- McGarry T.J. et al., (1998) *Cell*. 93(6):1043-53.
- Pitulescu M. et al., (2005) *Cell Mol Life Sci*. 62(13):1425-33.
- Luo L. et al., (2004) *Nature*. 427(6976):749-53.

DATA

Western blot analysis (WB)



The cell lysate of K562 (40ug) was resolved by SDS-PAGE, transferred to PVDF membrane and probed with anti-human Geminin (1:500). Proteins were visualized using a goat anti-mouse secondary antibody conjugated to HRP and an ECL detection system.