

# Human NPM1 antibody

Catalog Number: ANP0626

## PRODUCT INFORMATION

---

**Catalog number**

ANP0626

**Clone No.**

5E3

**Product type**

Monoclonal Antibody

**UnitProt No.**

P06748

**NCBI Accession No.**

NP\_002511

**Alternative Names**

nucleophosmin (nucleolar phosphoprotein B23,numatrin),B23, NPM, MGC104254, nucleolar phosphoprotein B23, numatrin, nucleophosmin/nucleoplasmin family, member 1

## PRODUCT SPECIFICATION

---

**Antibody Host**

Mouse

**Reacts With**

Human

**Concentration**

1mg/ml (determined by BCA assay)

**Formulation**

Liquid in. Phosphate-Buffered Saline (pH 7.4) with 0.02% Sodium Azide, 10% glycerol

**Immunogen**

Recombinant human NPM (81-294aa) purified from E. coli

**Isotype**

IgG2b kappa

**Purification Note**

By protein-G affinity chromatography

**Application**

ELISA, WB, ICC/IF, IHC, FACS

**Usage**

The antibody has been tested by ELISA, Western blot, ICC/IF, FACS and IHC analysis to assure specificity and reactivity. Since application varies, however, each investigation should be titrated by the reagent to obtain optimal results.

# Human NPM1 antibody

Catalog Number: ANP0626

## Storage

Can be stored at +2C to +8C for 1 week. For long term storage, aliquot and store at -20C to -80C. Avoid repeated freezing and thawing cycles.

## BACKGROUND

### Description

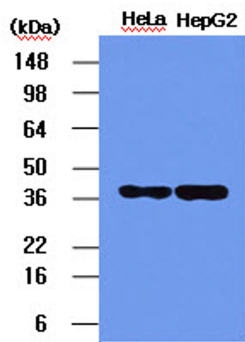
Nucleophosmin (NPM; also known as B23, NO38, or numatrin) is a nucleolar phosphoprotein that binds the tumor suppressors p53 and p19Arf and is thought to be indispensable for ribogenesis, cell proliferation, and survival after DNA damage. Nucleophosmin is upregulated in many cancer cells.

### General References

Maiguel DA et al., (2004) Mol cell Biol 24:3703-3711.  
Colombo Emanuela et al., (2005) Mol cell Biol 25:8874-8886.

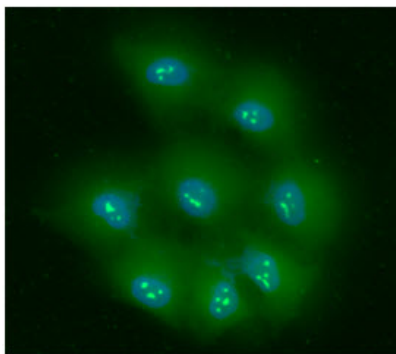
## DATA

### Western blot analysis (WB)



The HeLa and HepG2 cell lysates (5ug) were resolved by SDS-PAGE, transferred to PVDF membrane and probed with anti-human NPM (1:1,000). Proteins were visualized using a goat anti-mouse secondary antibody conjugated to HRP and an ECL detection system.

### Immunocytochemistry/Immunofluorescence (ICC/IF)

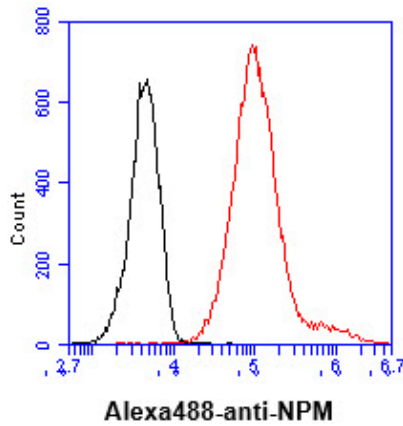


ICC/IF analysis of NPM in HeLa cells. The cell was stained with ANP0626 (1:100). The secondary antibody (green) was used Alexa Fluor 488. DAPI was stained the cell nucleus (blue).

### Flow cytometry (FACS)

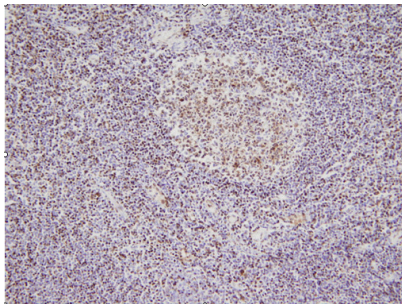
## Human NPM1 antibody

Catalog Number: ANP0626



Flow cytometry analysis of NPM in HeLa cell line, staining at 2-5ug for  $1 \times 10^6$  cells (red line). The secondary antibody used goat anti-mouse IgG Alexa fluor 488 conjugate. Isotype control antibody was mouse IgG (black line).

### Immunohistochemistry (IHC)



This image shows paraffin-embedded human palatine tonsil tissue sample stained with anti-NPM antibody (5E3) at 1:100 dilution.