

Human C-Reactive Protein/CRP antibody

Catalog Number: ACR0631

PRODUCT INFORMATION

Catalog number

ACR0631

Clone No.

5A9

Product type

Monoclonal Antibody

UnitProt No.

P02741

NCBI Accession No.

NP_000558

Alternative Names

C-reactive protein(pentraxin-related), PTX1, MGC88244, MGC149895, C-reactive protein pentraxin-related, pentraxin 1

PRODUCT SPECIFICATION

Antibody Host

Mouse

Reacts With

Human

Concentration

1mg/ml (determined by BCA assay)

Formulation

Liquid in. Phosphate-Buffered Saline (pH 7.4) with 0.02% Sodium Azide, 10% glycerol

Immunogen

Recombinant human CRP (19-224aa) purified from E. coli

Isotype

IgG2a kappa

Purification Note

By protein-G affinity chromatography

Application

ELISA,WB,ICC/IF,FACS

Usage

The antibody has been tested by ELISA, Western blot, ICC/IF and FACS analysis to assure specificity and reactivity. Since application varies, however, each investigation should be titrated by the reagent to obtain optimal results.

Human C-Reactive Protein/CRP antibody

Catalog Number: ACR0631

Storage

Can be stored at +2C to +8C for 1 week. For long term storage, aliquot and store at -20C to -80C. Avoid repeated freezing and thawing cycles.

BACKGROUND

Description

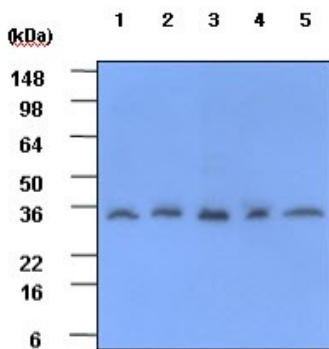
C-reactive protein (CRP) is an acute-phase protein with a well-known association with infection and other inflammatory conditions. Mild elevations in C-reactive protein concentration predict myocardial infarction, stroke, and vascular death in a variety of clinical settings. Despite the lack of specific evidence that C-reactive protein levels are independently associated with cardiovascular risk in patients with hypertension, the prognostic value of C-reactive protein has proven to be complementary to that of blood pressure values.

General References

Alexander J. S et al., (2000) Infect Immun 68(10):5652-5656.
Schillaci G. et al., (2006) Nutr Metab Cardiovasc Dis. 16(7):500-8.

DATA

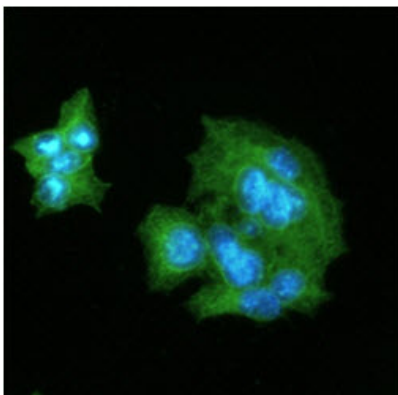
Western blot analysis (WB)



The cell lysates(40ug) were resolved by SDS-PAGE, transferred to PVDF membrane and probed with anti-human CRP antibody (1:1000). Proteins were visualized using a goat anti-mouse secondary antibody conjugated to HRP and an ECL detection system.

Lane 1.: NIH-3T3 cell lysate
Lane 2.: HepG2 cell lysate
Lane 3.: Jurkat cell lysate
Lane 4.: HeLa cell lysate
Lane 5.: SH-SY5Y cell lysate

Immunocytochemistry/Immunofluorescence (ICC/IF)

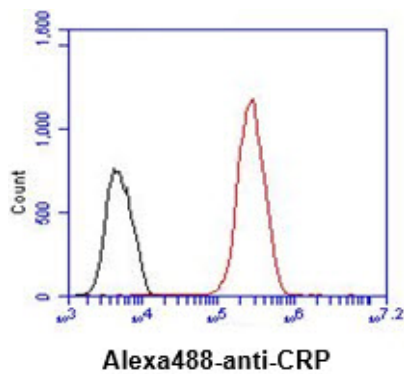


ICC/IF analysis of CRP in HepG2 cells. The cell was stained with ACR0631 (1:100). The secondary antibody (green) was used Alexa Fluor 488. DAPI was stained the cell nucleus (blue).

Flow cytometry (FACS)

Human C-Reactive Protein/CRP antibody

Catalog Number: ACR0631



Flow cytometry analysis of CRP in HepG2 cell line, staining at 2-5ug for 1×10^6 cells (red line). The secondary antibody used goat anti-mouse IgG Alexa fluor 488 conjugate. Isotype control antibody was mouse IgG (black line).