

E.coli Maltose Binding Protein/MBP antibody

Catalog Number: AMB0710

PRODUCT INFORMATION

Catalog number

AMB0710

Clone No.

10C12

Product type

Monoclonal Antibody

UnitProt No.

P0AEX9

NCBI Accession No.

NP_418458.1

Alternative Names

ZCSL3, MMBP, MBP, Maltose binding protein, Maltodextrin-binding protein, malJ, malE, JW3994, JJJ3, Escherichia coli MBP, ECK4026, E.coli MBP, DPH4, Cytoplasmic maltose-binding protein

PRODUCT SPECIFICATION

Antibody Host

Mouse

Concentration

1mg/ml (determined by BCA assay)

Formulation

Liquid in. Phosphate-Buffered Saline (pH 7.4) with 0.02% Sodium Azide, 10% glycerol

Immunogen

Recombinant MBP purified from E. coli

Isotype

IgG1 kappa

Purification Note

By protein-A affinity chromatography

Application

ELISA, WB

Usage

The antibody has been tested by ELISA and Western blot analysis to assure specificity and reactivity. Since application varies, however, each investigation should be titrated by the reagent to obtain optimal results.

Storage

Can be stored at +2C to +8C for 1 week. For long term storage, aliquot and store at -20C to -80C. Avoid repeated freezing and thawing cycles.

E.coli Maltose Binding Protein/MBP antibody

Catalog Number: AMB0710

BACKGROUND

Description

Epitope tagging offers an easy and universal strategy for the identification and purification of proteins derived by recombinant DNA technology. The insertion of a Maltose Binding Protein (MBP) tag creates a stable fusion product that does not interfere with the bioactivity of the protein or with the biodistribution of the MBP tagged product.

General References

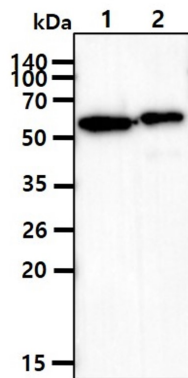
Jonathan D et al.,(1996) Proc Natl Acad Sci USA 93:211-215.

Weiming Y et al., (2001) EMBO J 20(3):362-371.

Chen Z et al., (2005) Proc Natl Acad Sci USA 102(29):10200-10205.

DATA

Western blot analysis (WB)



The recombinant proteins (50ng) were resolved by SDS-PAGE, transferred to PVDF membrane and probed with anti-human MBP antibody (1:1000). Proteins were visualized using a goat anti-mouse secondary antibody conjugated to HRP and an ECL detection system.
Lane 1.: MBP-tagged WLS protein(58.9kDa)
Lane 2.: MBP-tagged IRF7 protein(59.3kDa)