

# Human Clusterin/CLU antibody

Catalog Number: ACL0711

## PRODUCT INFORMATION

---

**Catalog number**

ACL0711

**Clone No.**

1A11

**Product type**

Monoclonal Antibody

**UnitProt No.**

P10909

**NCBI Accession No.**

NP\_001822

**Alternative Names**

Clusterin, ApoJ, clusterin (complement lysis inhibitor SP-40,40, sulfated glycoprotein 2 testosterone-repressed prostate message 2 apolipoprotein J), SGP-2, SP-40, TRPM-2, KUB1, complement lysis inhibitor, ulfated glycoprotein 2, testosterone-repressed prostate message 2, apolipoprotein J

## PRODUCT SPECIFICATION

---

**Antibody Host**

Mouse

**Reacts With**

Human

**Concentration**

1mg/ml (determined by BCA assay)

**Formulation**

Liquid in. Phosphate-Buffered Saline (pH 7.4) with 0.02% Sodium Azide, 10% glycerol

**Immunogen**

Recombinant human Clusterin (1-333aa) purified from E. coli

**Isotype**

IgG1 kappa

**Purification Note**

By protein-G affinity chromatography

**Application**

ELISA, WB, ICC/IF, IHC, FACS

**Usage**

The antibody has been tested by ELISA, Western blot, ICC/IF, FACS and IHC analysis to assure specificity and reactivity. Since application varies, however, each investigation should be titrated by the reagent to obtain optimal results.

# Human Clusterin/CLU antibody

Catalog Number: ACL0711

## Storage

Can be stored at +2C to +8C for 1 week. For long term storage, aliquot and store at -20C to -80C. Avoid repeated freezing and thawing cycles.

## BACKGROUND

---

### Description

Clusterin has been implicated in numerous processes including active cell death, immune regulation, cell adhesion and morphological transformation. Clusterin (previously named SP-40) is a glycoprotein, 80kDa comprising two distinct 40kDa polypeptide chains. It shows marked similarity, both physicochemically and in immunohistological distribution, to the single chain, 80kDa, Sprotein, an additional component of the SC5b-9 complex. Clusterin is a secreted glycoprotein of which the exact function remains a matter for speculation.

### General References

- Maximino R et al., (2000) Am J Pathol 157(2):393-399.
- Ingrid C.G et al., (1998) Biochem J 331:231-237.
- Maximino R et al., (1990) J Clin Invest 85:1477-1486.
- Fabien L et al., (2006) Biochem J 395(1):223-231.

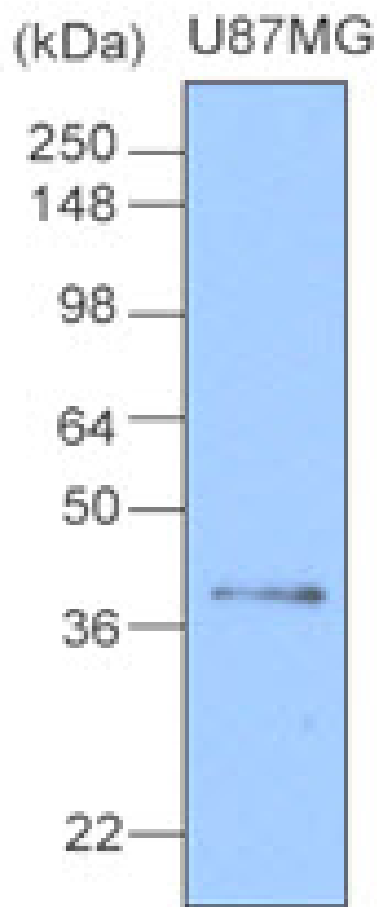
## DATA

---

### Western blot analysis (WB)

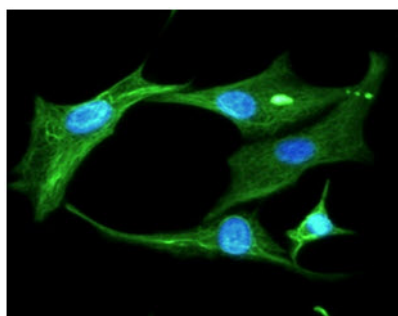
## Human Clusterin/CLU antibody

Catalog Number: ACL0711



The cell lysate of U87MG (20ug) was resolved by SDS-PAGE, transferred to NC membrane and probed with anti-human Clusterin (1:1000). Proteins were visualized using a goat anti-mouse secondary antibody conjugated to HRP and an ECL detection system.

### Immunocytochemistry/Immunofluorescence (ICC/IF)

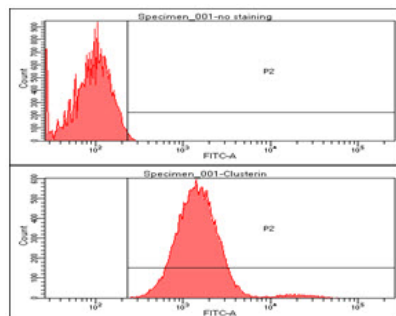


ICC/IF analysis of Clusterin in U87MG cells. The cell was stained with ACL0711 (1:100). The secondary antibody (green) was used Alexa Fluor 488. DAPI was stained the cell nucleus (blue).

### Flow cytometry (FACS)

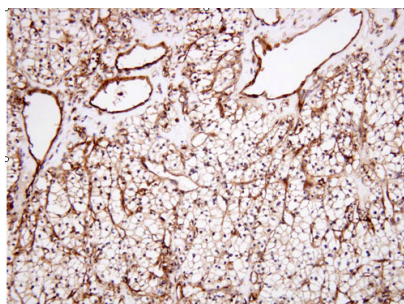
## Human Clusterin/CLU antibody

Catalog Number: ACL0711



Flow cytometry analysis of Clusterin in U87MG cell line, staining at 2-5ug for  $1 \times 10^6$  cells. The secondary antibody used goat anti-mouse IgG Alexa fluor 488 conjugate.

### Immunohistochemistry (IHC)



Paraffin embedded sections of human renal cell carcinoma tissue were incubated with anti-human Clusterin (1:100) for 2 hours at room temperature. Antigen retrieval was performed in 0.1M sodium citrate buffer and detected using Diaminobenzidine (DAB)