

Human SNAP25 antibody

Catalog Number: ASN0720

PRODUCT INFORMATION

Catalog number

ASN0720

Clone No.

4E11

Product type

Monoclonal Antibody

UnitProt No.

P60880

NCBI Accession No.

NP_570824

Alternative Names

Synaptosomal-associated protein 25 isoform SNAP25B, SNAP25, SNAP, SNAP25, Synaptosomal-associated protein, His- tag, SNAP-25, Synaptosomal-associated 25 kDa protein, Super protein, SuP, Synaptosomal-associated protein 25, Synaptosomal-associated protein 25 isoform SNAP25B bA416N4.2, Bdr, dJ1068F16.2, FLJ23079, HGNC:11132, MGC105414, MGC139754, Resistance to inhibitors of cholinesterase 4 homolog, RIC 4, RIC4, SEC9, SNAP 25, SNAP-25B, SNP 25, sp, Synaptosomal associated 25 kDa protein, Synaptosomal associated protein, Synaptosomal Associated Protein 25, Synaptosomal associated protein 25kDa

PRODUCT SPECIFICATION

Antibody Host

Mouse

Reacts With

Human

Concentration

1mg/ml (determined by BCA assay)

Formulation

Liquid in. Phosphate-Buffered Saline (pH 7.4) with 0.02% Sodium Azide, 10% glycerol

Immunogen

Recombinant human SNAP25 (1-206aa) purified from E. coli

Isotype

IgG1 kappa

Purification Note

By protein-G affinity chromatography

Application

ELISA, WB, ICC/IF

Human SNAP25 antibody

Catalog Number: ASN0720

Usage

The antibody has been tested by ELISA, Western blot and ICC/IF analysis to assure specificity and reactivity. Since application varies, however, each investigation should be titrated by the reagent to obtain optimal results.

Storage

Can be stored at +2C to +8C for 1 week. For long term storage, aliquot and store at -20C to -80C. Avoid repeated freezing and thawing cycles.

BACKGROUND

Description

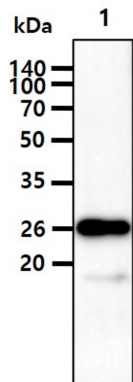
The synaptosomal-associated protein (SNAP25) is an essential component of the core complex that mediates presynaptic vesicle trafficking. Thus, SNAP25 is directly involved in the release of neurotransmitters.

General References

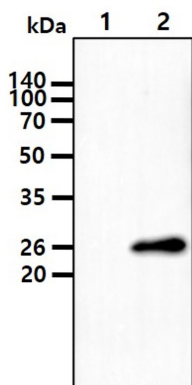
Schulz JR et al., (1998) J Biol Chem 273(38):24355-9.
Tafaya LC et al., (2006) J Neurosci 26(30):7826-38.

DATA

Western blot analysis (WB)



The tissue lysate (30ug) was resolved by SDS-PAGE, transferred to PVDF membrane and probed with anti-human SNAP25 antibody (1:2000). Proteins were visualized using a goat anti-mouse secondary antibody conjugated to HRP and an ECL detection system.
Lane 1.: Mouse brain tissue lysate

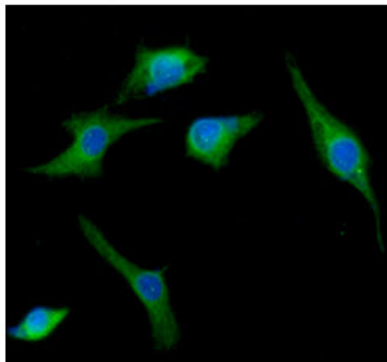


The cell lysates (10ug) were resolved by SDS-PAGE, transferred to PVDF membrane and probed with anti-human SNAP25 antibody (1:3000). Proteins were visualized using a goat anti-mouse secondary antibody conjugated to HRP and an ECL detection system.
Lane 1.: 293T cell lysate
Lane 2.: SNAP25 Transfected 293T cell lysate

Immunocytochemistry/Immunofluorescence (ICC/IF)

Human SNAP25 antibody

Catalog Number: ASN0720



ICC/IF analysis of SNAP25 in U87MG cells. The cell was stained with ASN0720 (1:100). The secondary antibody (green) was used Alexa Fluor 488. DAPI was stained the cell nucleus (blue).