

Human NSD3 antibody

Catalog Number: ANS0804

PRODUCT INFORMATION

Catalog number

ANS0804

Clone No.

AT7B4

Product type

Monoclonal Antibody

UnitProt No.

Q9BZ95

NCBI Accession No.

NP_075447

Alternative Names

Transcription elongation factor B polypeptide 3 binding protein 1, DKFZp667H044, FLJ20353, Histone lysine N methyltransferase NSD3, MGC126766, MGC142029, NSD 3, Nuclear set domain containing 3, Nuclear SET domain containing protein 3, pp14328, Whistle, WHSC1 like protein 1, WHSC1L1 protein, Wolf Hirschhorn syndrome candidate 1 like 1,

PRODUCT SPECIFICATION

Antibody Host

Mouse

Reacts With

Human

Concentration

1mg/ml (determined by BCA assay)

Formulation

Liquid in. Phosphate-Buffered Saline (pH 7.4) with 0.02% Sodium Azide, 10% glycerol

Immunogen

Recombinant human NSD3 (383-660aa) purified from E. coli

Isotype

IgG2b kappa

Purification Note

By protein-G affinity chromatography

Application

ELISA, WB

Usage

The antibody has been tested by ELISA and Western blot analysis to assure specificity and reactivity. Since application varies, however, each investigation should be titrated by the reagent to obtain optimal results.

Human NSD3 antibody

Catalog Number: ANS0804

Storage

Can be stored at +2C to +8C for 1 week. For long term storage, aliquot and store at -20C to -80C. Avoid repeated freezing and thawing cycles.

BACKGROUND

Description

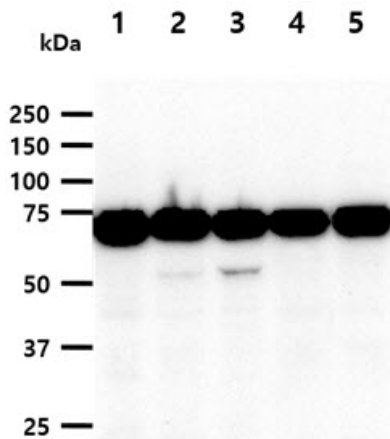
This gene encoding NSD3 is related to the Wolf-Hirschhorn syndrome candidate - 1 gene and encodes a protein with PWWP (proline-tryptophan-tryptophan-proline) domains. NSD3 is Histone methyltransferase which preferentially methylates 'Lys-4' and 'Lys-27' of histone H3 and is amplified in several tumor cell lines and primary breast carcinomas.

General References

Angrand P.O, et al. (2001) Genomics 74(1):79-88
Stec I, et al. (2000) FEBS Lett 473(1):1-5

DATA

Western blot analysis (WB)



The cell lysates (40ug) were resolved by SDS-PAGE, transferred to PVDF membrane and probed with anti-human NSD3 antibody (1:1000). Proteins were visualized using a goat anti-mouse secondary antibody conjugated to HRP and an ECL detection system.

Lane 1.: 293T cell lysate
Lane 2.: HeLa cell lysate
Lane 3.: MCF7 cell lysate
Lane 4.: NIH3T3 cell lysate
Lane 5.: U87MG cell lysate