

# Human CIB1 antibody

Catalog Number: ACI0807

## PRODUCT INFORMATION

---

**Catalog number**

ACI0807

**Clone No.**

1D1

**Product type**

Monoclonal Antibody

**UnitProt No.**

Q99828

**NCBI Accession No.**

NP\_006375

**Alternative Names**

Calcium and integrin binding 1, CIB, KIP (Kinase interacting protein), SIP2-28(SNK interacting protein2-28), CALMYRIN, CIB1, Calcium and integrin binding 1 Calcium and integrin binding 1 (calmyrin), Calcium and integrin binding protein 1, CIB, DNA PKcs interacting protein, Human Snk interacting protein 2 to 28 mRNA complete cds, Kinase interacting protein, PRKDCIP, SIP2 28, SNK interacting protein 2 to 28

## PRODUCT SPECIFICATION

---

**Antibody Host**

Mouse

**Reacts With**

Human

**Concentration**

1mg/ml (determined by BCA assay)

**Formulation**

Liquid in. Phosphate-Buffered Saline (pH 7.4) with 0.02% Sodium Azide, 10% glycerol

**Immunogen**

Recombinant human CIB1 (1-191aa) purified from E. coli

**Isotype**

IgG2b kappa

**Purification Note**

By protein-G affinity chromatography

**Application**

ELISA, WB, ICC/IF

**Usage**

The antibody has been tested by ELISA, Western blot and ICC/IF analysis to assure specificity and reactivity. Since application varies, however, each investigation should be titrated by the reagent to obtain optimal results.

# Human CIB1 antibody

Catalog Number: ACI0807

## Storage

Can be stored at +2C to +8C for 1 week. For long term storage, aliquot and store at -20C to -80C. Avoid repeated freezing and thawing cycles.

## BACKGROUND

### Description

CIB1 (Calcium and integrin binding 1) is regulatory protein with 50% homology to calmodulin and calcineurin B, that encodes a member of the calcium-binding protein family. The specific function of this protein has not yet been determined; however this protein is known to interact with DNA-dependent protein kinase and may play a role in kinase-phosphatase regulation of DNA end joining. Also CIB1 is widely expressed and binds to a number of effectors, such as integrin alpha11b, PAK1, and polo-like kinases in different tissues.

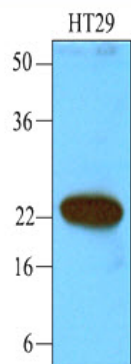
### General References

Yuan W, et al., (2006) Mol Cell Biol 26(22): 8507-14.

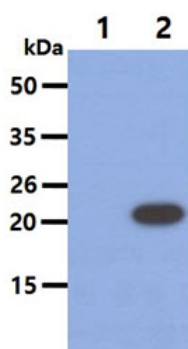
Yuan W, et al., (2006) J Cell Biol 16  
172(2):169-75.

## DATA

### Western blot analysis (WB)



The cell lysate of HT29 (40ug) was resolved by SDS-PAGE, transferred to NC membrane and probed with anti-human CIB1 (1:1000). Proteins were visualized using a goat anti-mouse secondary antibody conjugated to HRP and an ECL detection system.



The cell lysates (10ug) were resolved by SDS-PAGE, transferred to PVDF membrane and probed with anti-human CIB1 antibody (1:1000). Proteins were visualized using a goat anti-mouse secondary antibody conjugated to HRP and an ECL detection system.

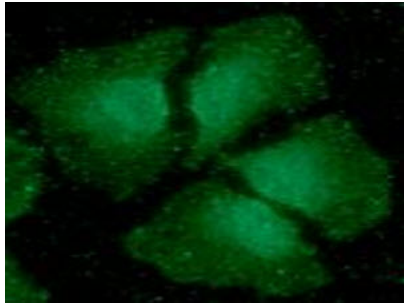
Lane 1.: 293T cell lysate

Lane 2.: CIB1 Transfected 293T cell lysate

### Immunocytochemistry/Immunofluorescence (ICC/IF)

## Human CIB1 antibody

Catalog Number: ACI0807



ICC/IF analysis of CIB1 in HeLa cells. The cell was stained with ACI0807 (1:100). The secondary antibody (green) was used Alexa Fluor 488. DAPI was stained the cell nucleus (blue).