

# Human PP1 Catalytic Subunit/PPP1CA antibody

Catalog Number: APP0808

## PRODUCT INFORMATION

---

**Catalog number**

APP0808

**Clone No.**

4G3

**Product type**

Monoclonal Antibody

**UnitProt No.**

P62136

**NCBI Accession No.**

NP\_002699

**Alternative Names**

serine/threonine-protein phosphatase PP1-alpha catalytic subunit isoform 1, protein phosphatase 1 catalytic subunit alpha isozyme, PP-1A, PP1alpha, ppp1a, MGC15877, MGC1674

## PRODUCT SPECIFICATION

---

**Antibody Host**

Mouse

**Reacts With**

Human

**Concentration**

1mg/ml (determined by BCA assay)

**Formulation**

Liquid in. Phosphate-Buffered Saline (pH 7.4) with 0.02% Sodium Azide, 10% glycerol

**Immunogen**

Recombinant human PPP1CA (30-299aa) purified from E. coli

**Isotype**

IgG2a kappa

**Purification Note**

By protein-G affinity chromatography

**Application**

ELISA, WB, ICC/IF

**Usage**

The antibody has been tested by ELISA, Western blot and ICC/IF analysis to assure specificity and reactivity. Since application varies, however, each investigation should be titrated by the reagent to obtain optimal results.

# Human PP1 Catalytic Subunit/PPP1CA antibody

Catalog Number: APP0808

## Storage

Can be stored at +2C to +8C for 1 week. For long term storage, aliquot and store at -20C to -80C. Avoid repeated freezing and thawing cycles.

## BACKGROUND

### Description

Protein phosphatase 1, catalytic subunit, alpha isoform, also known as PPP1CA, is one of the three catalytic subunits of protein phosphatase 1. The protein is highly conserved in eukaryotic cells and play a role in dephosphorylating substrates such as the postsynaptic density-associated Ca<sup>2+</sup>/calmodulin dependent protein kinase II. It is participate in the regulation of a variety of cellular processes, such as cell division, glycogen metabolism, muscle contractility, protein synthesis and apoptosis.

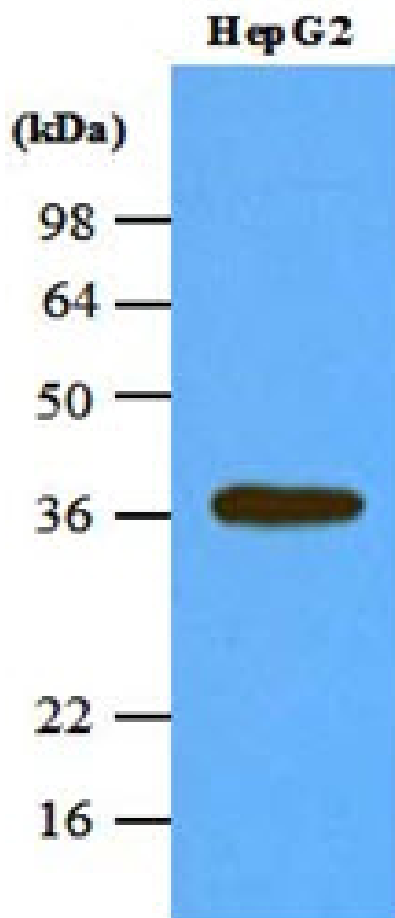
### General References

Cohen PT. (2002) J Cell Sci. 115(2):241-56.

Hsu LC, et al. (2006) Oncogene. 25(40):5517-26.

## DATA

### Western blot analysis (WB)

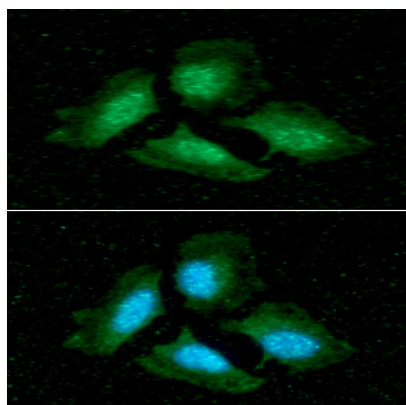


The cell lysate of HepG2 (45ug) was resolved by SDS-PAGE, transferred to NC membrane and probed with anti-human PPP1CA (1:1000). Proteins were visualized using a goat anti-mouse secondary antibody conjugated to HRP and an ECL detection system.

## Human PP1 Catalytic Subunit/PPP1CA antibody

Catalog Number: APP0808

### Immunocytochemistry/Immunofluorescence (ICC/IF)



ICC/IF analysis of PPP1CA in HeLa cells. The cell was stained with APP0808 (1:100). The secondary antibody (green) was used Alexa Fluor 488. DAPI was stained the cell nucleus (blue).