

# Human HSP60 antibody

Catalog Number: AHS0815

## PRODUCT INFORMATION

---

**Catalog number**

AHS0815

**Clone No.**

2E4

**Product type**

Monoclonal Antibody

**UnitProt No.**

P10809

**NCBI Accession No.**

NP\_002147

**Alternative Names**

Heat shock 60kDa protein 1, CPN60, GroEL, HSP65, SPG13, HuCHA60, Heat shock 60kDa protein 1, HSP60, Heat shock 60kDa protein 1 60 kDa chaperonin, GroEL, E. coli, homolog of, 60 kDa heat shock protein mitochondrial, 60kDa, cb863, Chaperonin, Chaperonin 60, Chaperonin, 60-KD, CPN 60, fa04a05, fb22d10, fi27b05, GroEL Homolog, Heat shock 60kD protein 1 (chaperonin), Heat shock 60kD protein 1 chaperonin, heat shock 60kDa protein 1 (chaperonin), Heat shock protein 1 (chaperonin), Heat Shock Protein 60, Heat shock protein 65, HLD4, Hsp 60, HSP 65, HSPD 1, HSPD1, HuCHA60, id:ibd2197, Spastic paraplegia 13 Mitochondrial matrix protein P1, P60 lymphocyte protein, sb:cb144, Short heat shock protein 60 Hsp60s1, Spastic paraplegia 13 (autosomal dominant), SPG 13, wu:fa04a05, wu:fb22d10, wu:fi04a12, wu:fi27b05.

## PRODUCT SPECIFICATION

---

**Antibody Host**

Mouse

**Reacts With**

Human

**Concentration**

1mg/ml (determined by BCA assay)

**Formulation**

Liquid in. Phosphate-Buffered Saline (pH 7.4) with 0.02% Sodium Azide, 10% glycerol

**Immunogen**

Recombinant human Hsp60 (1-573aa) purified from E. coli

**Isotype**

IgG1 kappa

**Purification Note**

By protein-G affinity chromatography

**Application**

ELISA, WB, ICC/IF, IHC

# Human HSP60 antibody

Catalog Number: AHS0815

## Usage

The antibody has been tested by ELISA, Western blot, ICC/IF and IHC analysis to assure specificity and reactivity. Since application varies, however, each investigation should be titrated by the reagent to obtain optimal results.

## Storage

Can be stored at +2C to +8C for 1 week. For long term storage, aliquot and store at -20C to -80C. Avoid repeated freezing and thawing cycles.

## BACKGROUND

### Description

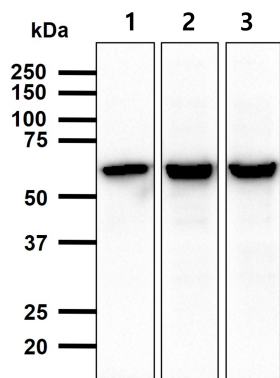
Heat shock protein 60 (HSP60) is a mitochondrial chaperonin that is typically held responsible for the transportation and refolding of proteins from the cytoplasm into the mitochondrial matrix. HSP60 is the ~60kDa mammalian equivalent to GroEL of *E. coli*. Process of HSP60 is regulated by the cochaperonin HSP10, a single heptameric ring of ~10kD subunits that forms a complex with HSP60. HSP10 coordinates the ATPase activity of the HSP60 subunits to allow the release of bound polypeptide in a manner productive for folding.

### General References

Cheng MY, et al., (1990) *Nature*. 348:455-8  
Ghosh JC, et al., (2008) *J Biol Chem*. 283(8):5188-94

## DATA

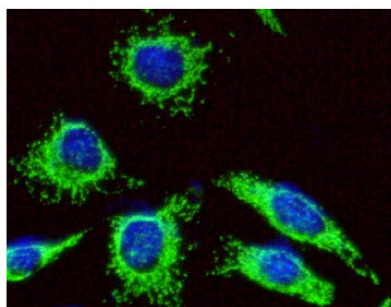
### Western blot analysis (WB)



Cell lysates (40ug) were resolved by SDS-PAGE, transferred to PVDF membrane and probed with anti-human Hsp60 (1:1000). Proteins were visualized using a goat anti-mouse secondary antibody conjugated to HRP and an ECL detection system.

Lane 1.: 293T cell lysate  
Lane 2.: HeLa cell lysate  
Lane 3.: A549 cell lysate

### Immunocytochemistry/Immunofluorescence (ICC/IF)

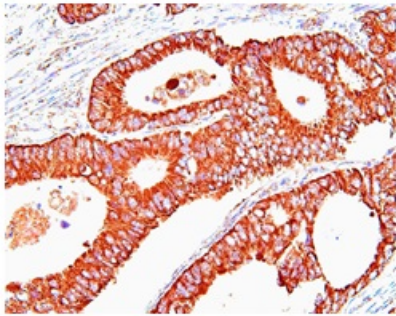


ICC/IF analysis of Hsp60 in HeLa cells. The cell was stained with AHS0815 (1:100). The secondary antibody (green) was used Alexa Fluor 488. DAPI was stained the cell nucleus (blue).

## Human HSP60 antibody

Catalog Number: AHS0815

### Immunohistochemistry (IHC)



Paraffin embedded sections of human colon cancer tissue were incubated with anti-human Hsp60 (1:50) for 2 hours at room temperature. Antigen retrieval was performed in 0.1M sodium citrate buffer and detected using Diaminobenzidine (DAB)