

Human visfatin/NAMPT antibody

Catalog Number: AVI0816

PRODUCT INFORMATION

Catalog number

AVI0816

Clone No.

4D5

Product type

Monoclonal Antibody

UnitProt No.

P43490

NCBI Accession No.

NP_005737

Alternative Names

Nicotinamide phosphoribosyltransferase, NAmPRTase, Nampt, Pre-B-cell colony-enhancing factor 1, Pre-B cell-enhancing factor, PBEF, PBEF1

PRODUCT SPECIFICATION

Antibody Host

Mouse

Reacts With

Human

Concentration

1mg/ml (determined by BCA assay)

Formulation

Liquid in. Phosphate-Buffered Saline (pH 7.4) with 0.02% Sodium Azide, 10% glycerol

Immunogen

Recombinant human Visfatin (1-491aa) purified from E. coli

Isotype

IgG1 kappa

Purification Note

By protein-G affinity chromatography

Application

ELISA, WB, ICC/IF

Usage

The antibody has been tested by ELISA, Western blot and ICC/IF analysis to assure specificity and reactivity. Since application varies, however, each investigation should be titrated by the reagent to obtain optimal results.

Human visfatin/NAMPT antibody

Catalog Number: AVI0816

Storage

Can be stored at +2C to +8C for 1 week. For long term storage, aliquot and store at -20C to -80C. Avoid repeated freezing and thawing cycles.

BACKGROUND

Description

Visfatin is pre-B cell colony-enhancing factor 1 (PBEF), which is predominantly secreted from visceral adipose tissue both in humans and mice. This protein has also been reported to be a cytokine (PBEF) that promotes B cell maturation and inhibits neutrophil apoptosis, or a visceral-fat derived hormone that acts by binding and activating the insulin receptor.

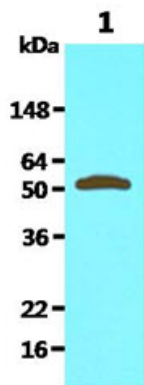
General References

Stephens JM, et al., (2006) *Curr Opin Lipidol.* 17:128-3.

Hug C, et al., (2005) *Science.* 307:366-367.

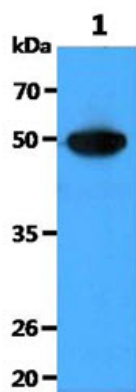
DATA

Western blot analysis (WB)



The cell lysate (30ug) was resolved by SDS-PAGE, transferred to PVDF membrane and probed with anti-human Visfatin (1:1000). Proteins were visualized using a goat anti-mouse secondary antibody conjugated to HRP and an ECL detection system.

Lane 1.: 293T cell lysate



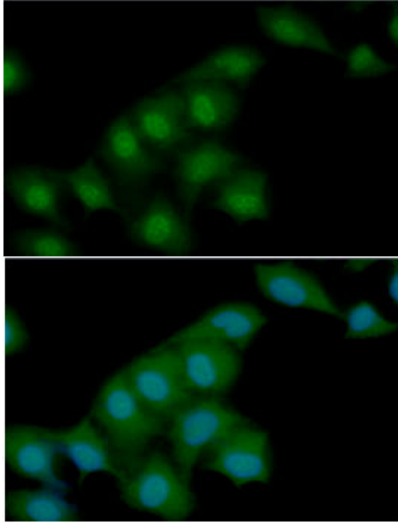
The cell lysate (40ug) was resolved by SDS-PAGE, transferred to PVDF membrane and probed with anti-human Visfatin (1:1000). Proteins were visualized using a goat anti-mouse secondary antibody conjugated to HRP and an ECL detection system.

Lane 1.: SW480 cell lysate

Immunocytochemistry/Immunofluorescence (ICC/IF)

Human visfatin/NAMPT antibody

Catalog Number: AVI0816



ICC/IF analysis of Visfatin in HeLa cells. The cell was stained with AVI0816 (1:100). The secondary antibody (green) was used Alexa Fluor 488. DAPI was stained the cell nucleus (blue).