

# Human Folate hydrolase 1/FOLH1 antibody

Catalog Number: APS0819

## PRODUCT INFORMATION

---

**Catalog number**

APS0819

**Clone No.**

k1H7

**Product type**

Monoclonal Antibody

**UnitProt No.**

Q04609

**NCBI Accession No.**

NP\_001014986

**Alternative Names**

Glutamate carboxypeptidase 2, Cell growth-inhibiting gene 27 protein, Folylpoly-gamma-glutamate carboxypeptidase, FGCP, Glutamate carboxypeptidase II, GCPII, Membrane glutamate carboxypeptidase, mGCP, N-acetylated-alpha-linked acidic dipeptidase I, NAALADase I, Prostate-specific membrane antigen, PSM, PSMA, Pteroylpoly-gamma-glutamate carboxypeptidase, FOLH, Naalad1

## PRODUCT SPECIFICATION

---

**Antibody Host**

Mouse

**Reacts With**

Human

**Concentration**

1mg/ml (determined by BCA assay)

**Formulation**

Liquid in. Phosphate-Buffered Saline (pH 7.4) with 0.02% Sodium Azide, 10% glycerol

**Immunogen**

Recombinant human PSMA (117-351aa) purified from E. coli

**Isotype**

IgG1 kappa

**Purification Note**

By protein-G affinity chromatography

**Application**

ELISA, WB, ICC/IF

**Usage**

The antibody has been tested by ELISA, Western blot and ICC/IF analysis to assure specificity and reactivity. Since application varies, however, each investigation should be titrated by the reagent to obtain optimal results.

# Human Folate hydrolase 1/FOLH1 antibody

Catalog Number: APS0819

## Storage

Can be stored at +2C to +8C for 1 week. For long term storage, aliquot and store at -20C to -80C. Avoid repeated freezing and thawing cycles.

## BACKGROUND

### Description

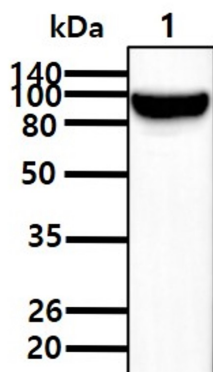
Prostate-specific membrane antigen (PSMA) is a 100-120 kDa type II transmembrane glycoprotein that is a glutamate-preferring carboxy-peptidase. Three functionally distinct proteins are encoded, including folylpoly-gamma-glutamate carboxypeptidase in the intestine, N-acetylated alpha-linked acidic dipeptidase 1 in the brain, and prostate-specific membrane antigen in the prostate. PSMA is highly expressed in prostate secretory-acinar epithelium, in some benign extraprostatic epithelial cells from breast, duodenum, and kidney tissues, and in prostate cancer.

### General References

- Rajasekaran SA, et al., (2008) Mol Cancer Ther 7(7):2142-2151.  
Polly D.G, et al., (2005) Int J Cancer 116(3):415-421.  
Susan F.S, et al., (2005) Expert Opin Ther Targets 9(3):561-570.

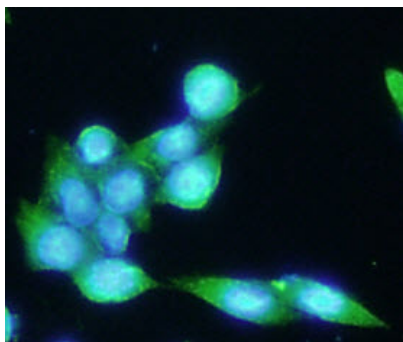
## DATA

### Western blot analysis (WB)



The Cell lysate of LNCaP(30ug) was resolved by SDS-PAGE, transferred to NC membrane and probed with anti-human PSMA (1:1,000). Proteins were visualized using a goat anti-mouse secondary antibody conjugated to HRP and an ECL detection system.

### Immunocytochemistry/Immunofluorescence (ICC/IF)



ICC/IF analysis of PSMA in LNCaP cells. The cell was stained with APS0819 (1:100). The secondary antibody (green) was used Alexa Fluor 488. DAPI was stained the cell nucleus (blue).