

Human HSPH1 antibody

Catalog Number: AHS0827

PRODUCT INFORMATION

Catalog number

AHS0827

Clone No.

J1G12

Product type

Monoclonal Antibody

UnitProt No.

Q92598

NCBI Accession No.

NP_006635

Alternative Names

Heat shock 105kDa/110kDa protein 1, HSPH1, Heat shock 105kDa/110kDa protein 1, HSP105alpha, HSP105-alpha, Heat shock 105kDa/110kDa protein 1 Antigen NY CO 25, DKFZp686M05240, Heat shock 105kD, Heat shock 105kD alpha, Heat shock 105kD beta, Heat shock 105kDa protein, Heat shock 105kDa protein 1, Heat shock 110kDa protein, Heat shock protein 105 kDa, HSP105A, HSP105B, HSP110, HSPH 1, KIAA0201, NY CO 25

PRODUCT SPECIFICATION

Antibody Host

Mouse

Reacts With

Human

Concentration

1mg/ml (determined by BCA assay)

Formulation

Liquid in. Phosphate-Buffered Saline (pH 7.4) with 0.02% Sodium Azide, 10% glycerol

Immunogen

Recombinant human Hsp105 alpha (1-858aa) purified from E. coli

Isotype

IgG2b kappa

Purification Note

By protein-G affinity chromatography

Application

ELISA, WB, ICC/IF, FACS

Usage

The antibody has been tested by ELISA, Western blot, ICC/IF and FACS analysis to assure specificity and reactivity. Since application varies, however, each investigation should be titrated by the reagent to obtain

Human HSPH1 antibody

Catalog Number: AHS0827

optimal results.

Storage

Can be stored at +2C to +8C for 1 week. For long term storage, aliquot and store at -20C to -80C. Avoid repeated freezing and thawing cycles.

BACKGROUND

Description

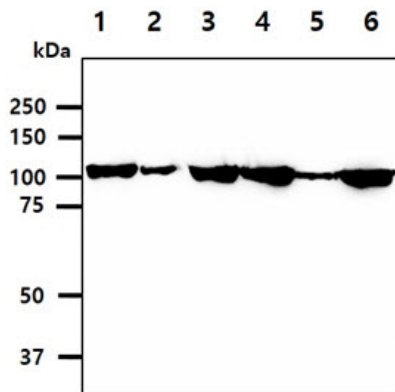
Hsp105 is a mammalian member of the HSP105/110 family, a diverged subgroup of the HSP70 family. HSP105 exists as two isoforms, alpha and beta. Hsp105 alpha associates with Hsp70/Hsc70 as complexes in vivo and regulates the chaperone activity of Hsp70/Hsc70 negatively in vitro and in vivo. Hsp105 alpha is constitutively expressed and also induced by various stress, whereas Hsp105beta, lacking 44 amino acids from Hsp105 alpha, is specifically expressed during mild heat shock. Although Hsp105 alpha is shown to localize in the cytoplasm of mammalian cells, cellular localization of Hsp105beta is not known.

General References

- Wang XY., et al. (2001) J Immunol. 166(1):490-7.
Yamagishi N., et al. (2006) Exp Cell Res. 312(17):3215-23.
Saito Y., et al. (2007) Exp Cell Res. 313(17):3707-17.

DATA

Western blot analysis (WB)



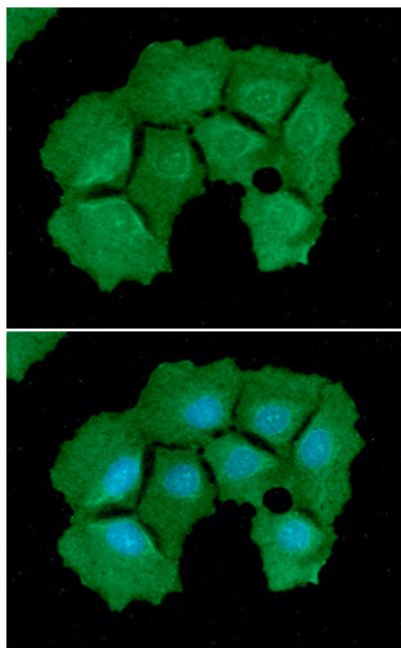
The cell lysates (40ug) were resolved by SDS-PAGE, transferred to PVDF membrane and probed with anti-human Hsp105 a antibody (1:1000). Proteins were visualized using a goat anti-mouse secondary antibody conjugated to HRP and an ECL detection system.

- Lane 1.: HeLa cell lysate
Lane 2.: HepG2 cell lysate
Lane 3.: NIH-3T3 cell lysate
Lane 4.: MCF7 cell lysate
Lane 5.: U-87 MG cell lysate
Lane 6.: A549 cell lysate

Immunocytochemistry/Immunofluorescence (ICC/IF)

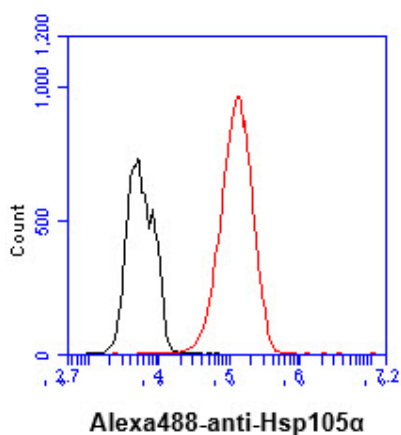
Human HSPH1 antibody

Catalog Number: AHS0827



ICC/IF analysis of Hsp105 alpha in Hep3B cells. The cell was stained with AHS0827 (1:100). The secondary antibody (green) was used Alexa Fluor 488. DAPI was stained the cell nucleus (blue).

Flow cytometry (FACS)



Flow cytometry analysis of Hsp105 alpha in Hep3B cell line, staining at 2-5ug for 1×10^6 cells (red line). The secondary antibody used goat anti-mouse IgG Alexa fluor 488 conjugate. Isotype control antibody was mouse IgG (black line).