

# Human PCNA antibody

Catalog Number: APC0828

## PRODUCT INFORMATION

---

**Catalog number**

APC0828

**Clone No.**

k1A3

**Product type**

Monoclonal Antibody

**UnitProt No.**

P12004

**NCBI Accession No.**

NP\_002583

**Alternative Names**

Proliferating cell nuclear antigen, MGC8367, Proliferating cell nuclear antigen, Proliferating cell nuclear antigen, PCNA

## PRODUCT SPECIFICATION

---

**Antibody Host**

Mouse

**Reacts With**

Human

**Concentration**

1mg/ml (determined by BCA assay)

**Formulation**

Liquid in. Phosphate-Buffered Saline (pH 7.4) with 0.02% Sodium Azide, 10% glycerol

**Immunogen**

Recombinant human PCNA (1-261aa) purified from E. coli

**Isotype**

IgG3 kappa

**Purification Note**

By protein-G affinity chromatography

**Application**

ELISA, WB

**Usage**

The antibody has been tested by ELISA and Western blot analysis to assure specificity and reactivity. Since application varies, however, each investigation should be titrated by the reagent to obtain optimal results.

# Human PCNA antibody

Catalog Number: APC0828

## Storage

Can be stored at +2C to +8C for 1 week. For long term storage, aliquot and store at -20C to -80C. Avoid repeated freezing and thawing cycles.

## BACKGROUND

### Description

PCNA (Proliferating Cell Nuclear Antigen) is found in the nucleus and is a cofactor of DNA polymerase delta. This protein is associated with DNA synthesis and repair. The encoded protein acts as a homotrimer and helps increase the processivity of leading strand synthesis during DNA replication. It appears during late G1- phase, S-phase of mitosis and persists until the end of the M-phase because of its long biological half-life. PCNA may be induced by UV irradiation, growth factors and eventually by neighboring tumors.

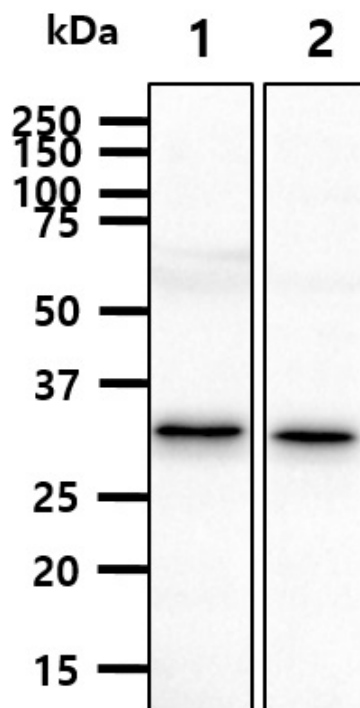
### General References

Moldovan GL, et al., (2007) Cell 18 129(4):665-679.

Matsumoto K , et al., (1987) EMBO 6(3):637-642.

## DATA

### Western blot analysis (WB)



The cell lysates (40ug) were resolved by SDS-PAGE, transferred to PVDF membrane and probed with anti-human PCNA (1:1000). Proteins were visualized using a goat anti-mouse secondary antibody conjugated to HRP and an ECL detection system.

Lane 1.: HeLa cell lysate

Lane 2.: NIH3T3 cell lysate