

Human Podoplanin antibody

Catalog Number: APD0833

PRODUCT INFORMATION

Catalog number

APD0833

Clone No.

5E2

Product type

Monoclonal Antibody

UnitProt No.

Q86YL7

NCBI Accession No.

NP_006465

Alternative Names

TIA2, T1A, T1 ALPHA GENE, T1 alpha, Podoplanin, PDPN, PA2.26 antigen, OTTHuMP00000044504, OTTHuMP00000009640, OTS8, Lung type I cell membrane-associated glycoprotein isoform a, Lung type I cell membrane associated glycoprotein isoform a AGGRuS, Lung type I cell membrane associated glycoprotein, hT1alpha2, hT1alpha1, HT1A-1, GP40, Gp38, GP36, Glycoprotein 36 KD

PRODUCT SPECIFICATION

Antibody Host

Mouse

Reacts With

Human

Concentration

1mg/ml (determined by BCA assay)

Formulation

Liquid in. Phosphate-Buffered Saline (pH 7.4) with 0.02% Sodium Azide, 10% glycerol

Immunogen

Recombinant human PDPN (1-206aa) purified from E. coli

Isotype

IgG2b kappa

Purification Note

By protein-G affinity chromatography

Application

ELISA, ICC/IF, FACS

Usage

The antibody has been tested by ELISA, ICC/IF and FACS analysis to assure specificity and reactivity. Since application varies, however, each investigation should be titrated by the reagent to obtain optimal results.

Human Podoplanin antibody

Catalog Number: APD0833

Storage

Can be stored at +2C to +8C for 1 week. For long term storage, aliquot and store at -20C to -80C. Avoid repeated freezing and thawing cycles.

BACKGROUND

Description

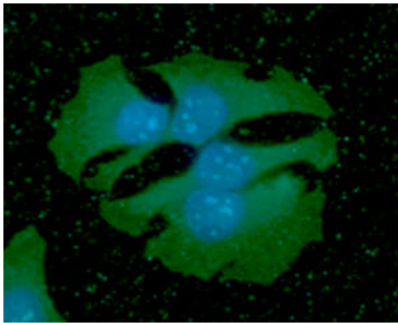
Podoplanin (PDPN) is a small mucin-like transmembrane protein, widely expressed in various specialized cell types throughout the body. This is a type-I integral membrane glycoprotein with diverse distribution in human tissues. The physiological function of this protein may be related to its mucin-type character.

General References

Wicki A., et al. (2006) Br J Cancer. 96(1):1-5.
Zimmer G., et al. (1999) Biochem J. 341(Pt2):277-84.

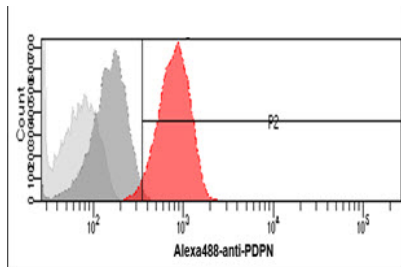
DATA

Immunocytochemistry/Immunofluorescence (ICC/IF)



ICC/IF analysis of Podoplanin in HaLe cells. The cell was stained with APD0833 (1:100). The secondary antibody (green) was used Alexa Fluor 488. DAPI was stained the cell nucleus (blue).

Flow cytometry (FACS)



Flow cytometry analysis of Podoplanin in HeLa cells. The cell was stained with APD0833 at 2-5ug for 1×10^6 cells (red). A Goat anti mouse IgG (Alexa fluor 488) was used as the secondary antibody. Mouse monoclonal IgG was used as the isotype control (dark gray), cells without incubation with primary and secondary antibody was used as the negative control (light gray).