

# Human PP2C gamma/PPM1G antibody

Catalog Number: APP0902

## PRODUCT INFORMATION

---

**Catalog number**

APP0902

**Clone No.**

k1G6

**Product type**

Monoclonal Antibody

**UnitProt No.**

O15355

**NCBI Accession No.**

NP\_002698

**Alternative Names**

## PRODUCT SPECIFICATION

---

**Antibody Host**

Mouse

**Reacts With**

Human

**Concentration**

1mg/ml (determined by BCA assay)

**Formulation**

Liquid in. Phosphate-Buffered Saline (pH 7.4) with 0.02% Sodium Azide, 10% glycerol

**Immunogen**

Recombinant human PPM1G (317-546aa) purified from E. coli

**Isotype**

IgG1 kappa

**Purification Note**

By protein-G affinity chromatography

**Application**

ELISA, WB, ICC/IF, IHC

**Usage**

The antibody has been tested by ELISA, Western blot, ICC/IF and IHC analysis to assure specificity and reactivity. Since application varies, however, each investigation should be titrated by the reagent to obtain optimal results.

**Storage**

Can be stored at +2C to +8C for 1 week. For long term storage, aliquot and store at -20C to -80C. Avoid repeated freezing and thawing cycles.

# Human PP2C gamma/PPM1G antibody

Catalog Number: APP0902

## BACKGROUND

### Description

PPM1G (Protein phosphatase 1G) is a member of the PP2C family of Serine/threonine protein phosphatases. PP2C family members are known to be negative regulators of cell stress response pathways. The human Ser/Thr phosphatase PPM1G promotes spliceosome assembly. This phosphatase is found to be responsible for the dephosphorylation of Pre-mRNA splicing factors, which is important for the formation of functional spliceosome.

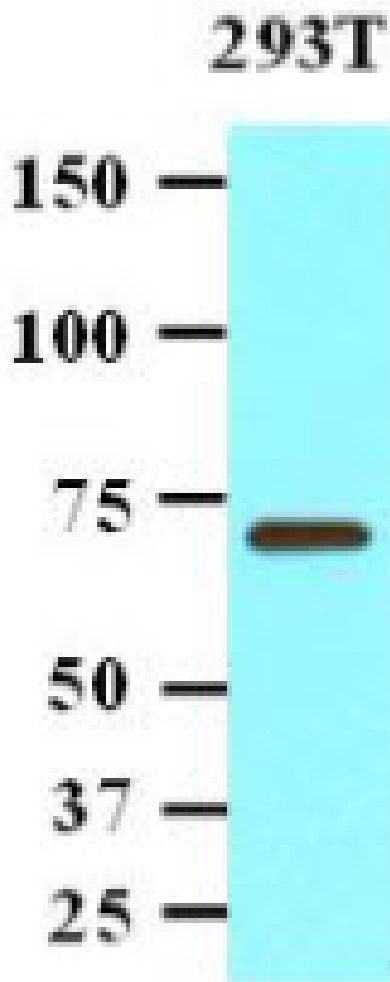
### General References

Suh EJ., et al. (2006) FEBS Lett 580 (26):6100-6104.

Marc Flajolet., et al. (2003) Proc Natl Acad Sci 100(26):16006-16011.

## DATA

### Western blot analysis (WB)

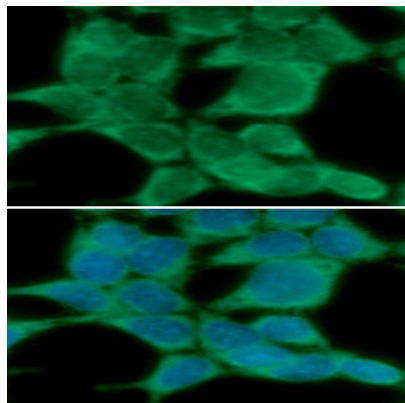


The 293T cell lysate (20ug) was resolved by SDS-PAGE, transferred to NC membrane and probed with anti-human PPM1G antibody (1:1000). Proteins were visualized using a goat anti-mouse secondary antibody conjugated to HRP and an ECL detection system.

### Immunocytochemistry/Immunofluorescence (ICC/IF)

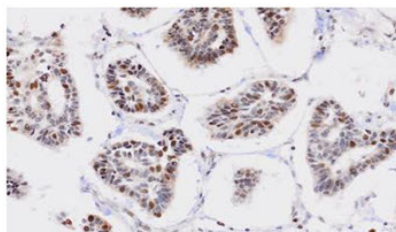
## Human PP2C gamma/PPM1G antibody

Catalog Number: APP0902



ICC/IF analysis of PPM1G in 293T cells. The cell was stained with APP0902 (1:100). The secondary antibody (green) was used Alexa Fluor 488. DAPI was stained the cell nucleus (blue).

### Immunohistochemistry (IHC)



Human breast cancer tissue

Paraffin embedded sections of human breast cancer tissue were incubated with anti-human PPM1G (1:50) for 2 hours at room temperature. Antigen retrieval was performed in 0.1M sodium citrate buffer and detected using Diaminobenzidine (DAB)