

# Human UbcH8/UBE2L6 antibody

Catalog Number: AUB0907

## PRODUCT INFORMATION

---

**Catalog number**

AUB0907

**Clone No.**

k1H3

**Product type**

Monoclonal Antibody

**UnitProt No.**

O14933

**NCBI Accession No.**

NP\_004214

**Alternative Names**

Ubiquitin conjugating enzyme E2 L6, Ubiquitin/ISG15-conjugating enzyme E2 L6, E2 ubiquitin-conjugating enzyme L6, Retinoic acid-induced gene B protein, RIG-B, UbcH8, Ubiquitin carrier protein L6, Ubiquitin-protein ligase L6

## PRODUCT SPECIFICATION

---

**Antibody Host**

Mouse

**Reacts With**

Human

**Concentration**

1mg/ml (determined by BCA assay)

**Formulation**

Liquid in. Phosphate-Buffered Saline (pH 7.4) with 0.02% Sodium Azide, 10% glycerol

**Immunogen**

Recombinant human UBE2L6 (1-152aa) purified from E. coli

**Isotype**

IgG2b kappa

**Purification Note**

By protein-G affinity chromatography

**Application**

ELISA, WB, ICC/IF, IHC

**Usage**

The antibody has been tested by ELISA, Western blot, ICC/IF and IHC analysis to assure specificity and reactivity. Since application varies, however, each investigation should be titrated by the reagent to obtain optimal results.

# Human UbcH8/UBE2L6 antibody

Catalog Number: AUB0907

## Storage

Can be stored at +2C to +8C for 1 week. For long term storage, aliquot and store at -20C to -80C. Avoid repeated freezing and thawing cycles.

## BACKGROUND

### Description

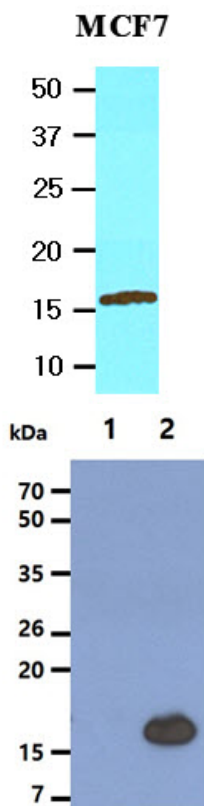
Ubiquitin-conjugating enzyme E2L6 (UBE2L6), also known as UbcH8, is a member of the E2 ubiquitin-conjugating enzyme family. The modification of proteins with ubiquitin is an important cellular mechanism for targeting abnormal or short-lived proteins for degradation. Ubiquitination of a protein substrate requires the concerted action of 3 classes of enzymes: E1 ubiquitin-activating enzymes, E2 ubiquitin-conjugating enzymes, and E3 ubiquitin protein ligases. The E2 ubiquitin-conjugating enzyme is highly similar in primary structure to the enzyme encoded by UBE2L3 gene.

### General References

- Ardley HC., et al. (2000) Cytogenet Cell Genet. 89(1-2):137-140.
- Movnihan TP., et al. (1999) J Biol Chem. 274(43):30963-30968.
- Kumar S., et al. (1997) J Biol Chem. 272(21):13548-13554.

## DATA

### Western blot analysis (WB)

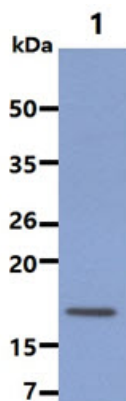


The cell lysate of MCF7 (20ug) was resolved by SDS-PAGE, transferred to NC membrane and probed with anti-human UBE2L6 (1:2000). Proteins were visualized using a goat anti-mouse secondary antibody conjugated to HRP and an ECL detection system.

The cell lysates (5ug) were resolved by SDS-PAGE, transferred to PVDF membrane and probed with anti-human UBE2L6 antibody (1:2000). Proteins were visualized using a goat anti-mouse secondary antibody conjugated to HRP and an ECL detection system.  
Lane 1.: 293T cell lysate  
Lane 2.: UBE2L6 Transfected 293T cell lysate

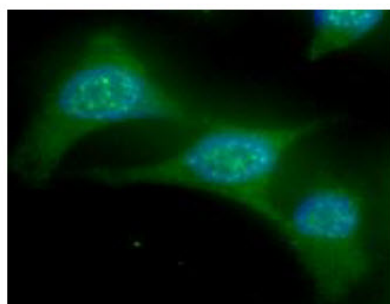
# Human UbcH8/UBE2L6 antibody

Catalog Number: AUB0907



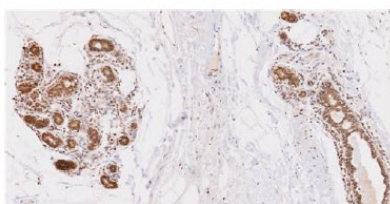
The cell lysate (20ug) was resolved by SDS-PAGE, transferred to PVDF membrane and probed with anti-human UBE2L6 antibody (1:2000). Proteins were visualized using a goat anti-mouse secondary antibody conjugated to HRP and an ECL detection system.  
Lane 1.: Jurkat cell lysate

## Immunocytochemistry/Immunofluorescence (ICC/IF)



ICC/IF analysis of UBE2L6 in HeLa cells. The cell was stained with AUB0907 (1:100). The secondary antibody (green) was used Alexa Fluor 488. DAPI was stained the cell nucleus (blue).

## Immunohistochemistry (IHC)



Paraffin embedded sections of human breast lobule tissue were incubated with anti-human UBE2L6 (1:50) for 2 hours at room temperature. Antigen retrieval was performed in 0.1M sodium citrate buffer and detected using Diaminobenzidine (DAB)