

Human EphA2 antibody

Catalog Number: AEA0909

PRODUCT INFORMATION

Catalog number

AEA0909

Clone No.

3D7

Product type

Monoclonal Antibody

UnitProt No.

P29317

NCBI Accession No.

NP_004422

Alternative Names

EPH receptor A2, Ephrin type-A receptor 2, EPHA2, Epithelial cell kinase, Tyrosine-protein kinase receptor ECK, ARCC2, CTPA, CTPP1, CTRCT6

PRODUCT SPECIFICATION

Antibody Host

Mouse

Reacts With

Human

Concentration

1mg/ml (determined by BCA assay)

Formulation

Liquid in. Phosphate-Buffered Saline (pH 7.4) with 0.02% Sodium Azide, 10% glycerol

Immunogen

Recombinant human EphA2 (559-976aa) purified from E. coli

Isotype

IgG2b kappa

Purification Note

By protein-G affinity chromatography

Application

ELISA, WB, IHC

Usage

The antibody has been tested by ELISA, Western blot and IHC analysis to assure specificity and reactivity. Since application varies, however, each investigation should be titrated by the reagent to obtain optimal results.

Human EphA2 antibody

Catalog Number: AEA0909

Storage

Can be stored at +2C to +8C for 1 week. For long term storage, aliquot and store at -20C to -80C. Avoid repeated freezing and thawing cycles.

BACKGROUND

Description

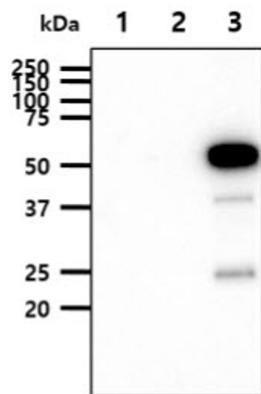
The Eph family of receptors is the largest known subfamily of receptor tyrosine kinases (RTK). Eph RTKs and their ligands, the ephrins, are frequently overexpressed in a variety of cancers and tumor cell lines. One Eph family member, EphA2, is also overexpressed in a wide variety of cancers, including breast, small-cell lung and gastrointestinal cancers, melanomas, and neuroblastomas. The ephrin-Eph interactions are important in development, especially in cell-cell interactions involved in nervous system patterning and possibly in cancer.

General References

Ireton RC, Chen J: (2005) *Curr Cancer Drug Targets*. 5(3), 149-57
Nakamoto M, Bergemann AD: (2002) *Microsc Res Tech*. 59(1), 58-67

DATA

Western blot analysis (WB)



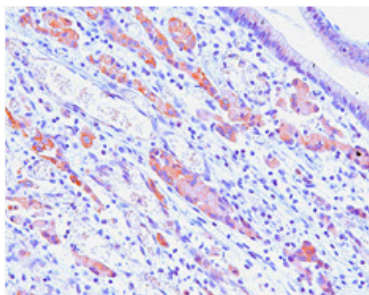
The cell lysates (10ug) were resolved by SDS-PAGE, transferred to PVDF membrane and probed with anti-human EphA2 antibody (1:1000). Proteins were visualized using a goat anti-mouse secondary antibody conjugated to HRP and an ECL detection system.

Lane 1.: 293T cell lysate

Lane 2.: EphA2 extracellular domain transfected 293T cell lysate

Lane 3.: EphA2 cytoplasmic domain transfected 293T cell lysate

Immunohistochemistry (IHC)

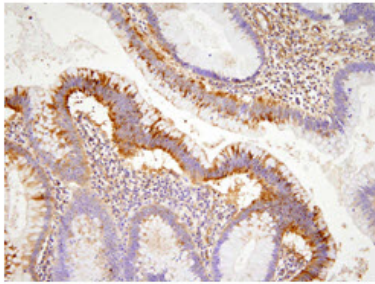


Human gastric cancer

Paraffin embedded sections of human gastric cancer tissue were incubated with anti-human EphA2 (1:100) for 2 hours at room temperature. Antigen retrieval was performed in 0.1M sodium citrate buffer and detected using Diaminobenzidine (DAB)

Human EphA2 antibody

Catalog Number: AEA0909



Human colon cancer

Paraffin embedded sections of human colon cancer tissue were incubated with anti-human EphA2 (1:100) for 2 hours at room temperature. Antigen retrieval was performed in 0.1M sodium citrate buffer and detected using Diaminobenzidine (DAB)