

# Human EPM2A antibody

Catalog Number: AEP0911

## PRODUCT INFORMATION

---

**Catalog number**

AEP0911

**Clone No.**

k2A3

**Product type**

Monoclonal Antibody

**UnitProt No.**

O95278

**NCBI Accession No.**

NP\_005661

**Alternative Names**

Laforin isoform a,epilepsy, progressive myoclonus type 2A Lafora disease (laforin), epilepsy progressive myoclonus type 2 Lafora disease (laforin), LDE, LD

## PRODUCT SPECIFICATION

---

**Antibody Host**

Mouse

**Reacts With**

Human

**Concentration**

1mg/ml (determined by BCA assay)

**Formulation**

Liquid in. Phosphate-Buffered Saline (pH 7.4) with 0.02% Sodium Azide, 10% glycerol

**Immunogen**

Recombinant human EPM2A (243-331aa) purified from E. coli

**Isotype**

IgG1 kappa

**Purification Note**

By protein-G affinity chromatography

**Application**

ELISA,WB,ICC/IF

**Usage**

The antibody has been tested by ELISA, Western blot and ICC/IF analysis to assure specificity and reactivity. Since application varies, however, each investigation should be titrated by the reagent to obtain optimal results.

# Human EPM2A antibody

Catalog Number: AEP0911

## Storage

Can be stored at +2C to +8C for 1 week. For long term storage, aliquot and store at -20C to -80C. Avoid repeated freezing and thawing cycles.

## BACKGROUND

### Description

Epilepsy, progressive myoclonus type 2A (EPM2A), also known as laforin, is a dual-specificity phosphatase that associates with polyribosomes. The protein may be involved in the control of glycogen metabolism, particularly in monitoring for and preventing the formation of poorly branched glycogen molecules. Defects in EPM2A are a cause of progressive myoclonic epilepsy type 2 (EPM2), also known as Lafora disease. EPM2 is an autosomal recessive and severe form of adolescent-onset progressive epilepsy.

### General References

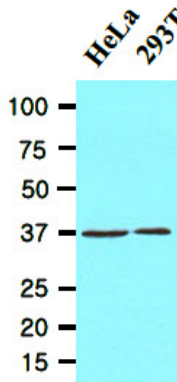
Tagliabracci V.S., et al. (2007) Proc Natl Acad Sci U S A. 104(49):19262-19266.

Wang W., et al. (2006) Biochem Biophys Res Commun. 350(3):588-592.

Ganesh S., et al. (2002) Hum Mol Genet. 11:1263-1271.

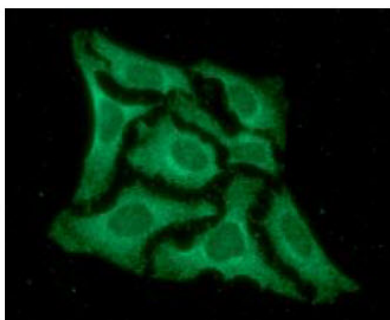
## DATA

### Western blot analysis (WB)



The cell lysates of HeLa and 293T (20ug) were resolved by SDS-PAGE, transferred to NC membrane and probed with anti-human EPM2A (1:1000). Proteins were visualized using a goat anti-mouse secondary antibody conjugated to HRP and an ECL detection system.

### Immunocytochemistry/Immunofluorescence (ICC/IF)



ICC/IF analysis of EPM2A in HeLa cells. The cell was stained with AEP0911 (1:100). The secondary antibody (green) was used Alexa Fluor 488. DAPI was stained the cell nucleus (blue).