

Human PDCD12 antibody

Catalog Number: APD0912

PRODUCT INFORMATION

Catalog number

APD0912

Clone No.

3G4

Product type

Monoclonal Antibody

UnitProt No.

Q9NQS1

NCBI Accession No.

NP_065104

Alternative Names

cell death regulator aven, apoptosis, caspase activation inhibitor, PDCD12, programmed cell death 12

PRODUCT SPECIFICATION

Antibody Host

Mouse

Reacts With

Human

Concentration

1mg/ml (determined by BCA assay)

Formulation

Liquid in. Phosphate-Buffered Saline (pH 7.4) with 0.02% Sodium Azide, 10% glycerol

Immunogen

Recombinant human PDCD12 (254-362aa) purified from E. coli

Isotype

IgG2a kappa

Purification Note

By protein-G affinity chromatography

Application

ELISA, WB, IHC

Usage

The antibody has been tested by ELISA, Western blot and IHC analysis to assure specificity and reactivity. Since application varies, however, each investigation should be titrated by the reagent to obtain optimal results.

Storage

Human PDCD12 antibody

Catalog Number: APD0912

Can be stored at +2C to +8C for 1 week. For long term storage, aliquot and store at -20C to -80C. Avoid repeated freezing and thawing cycles.

BACKGROUND

Description

PDCD12 (Programmed cell death 12), also referred to as AVEN, represents a new class of cell death regulator. PDCD12 is a conserved intracellular membrane protein that blocks apoptosis impeded by Apaf-1 mediated caspase activation. Bcl-2 and BAD also interact with PDCD12 to prevent apoptosis. It is expressed in a wide variety of normal tissues including heart, skeletal muscle, kidney, liver, testis, and diseases such as cancer

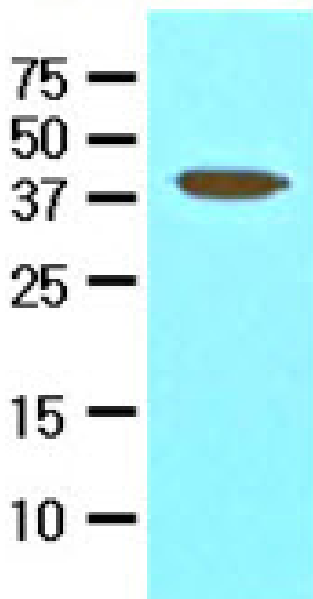
General References

Figueroa B Jr, et al: (2004) *Biotechnol Bioeng.* 85(6), 589-600.
Cheng EH, et al: (2000) *Mol Cell.* 6(1), 31-40.

DATA

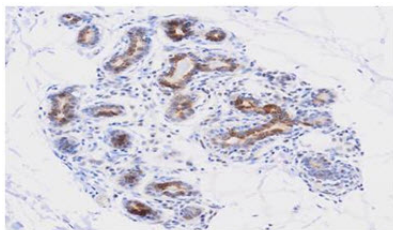
Western blot analysis (WB)

Mouse kidney



The tissue lysate of mouse kidney (50ug) was resolved by SDS-PAGE, transferred to NC membrane and probed with anti-human PDCD12 (1:1000). Proteins were visualized using a goat anti-mouse secondary antibody conjugated to HRP and an ECL detection system.

Immunohistochemistry (IHC)



Human breast lobule tissue

Paraffin embedded sections of human breast lobule tissue were incubated with anti-human PDCD12 (1:50) for 2 hours at room temperature. Antigen retrieval was performed in 0.1M sodium citrate buffer and detected using Diaminobenzidine (DAB)