

# Human HMG-1/HMGB1 antibody

Catalog Number: AHM0915

## PRODUCT INFORMATION

---

**Catalog number**

AHM0915

**Clone No.**

J2E1

**Product type**

Monoclonal Antibody

**UnitProt No.**

P09429

**NCBI Accession No.**

NP\_002119

**Alternative Names**

Sulfoglucuronyl carbohydrate binding protein, SBP-1, HMGB1, HMG3, HMG1, High-mobility group box1, High-mobility group (nonhistone chromosomal) protein 1, DKFZp686A04236, Amphoterin

## PRODUCT SPECIFICATION

---

**Antibody Host**

Mouse

**Reacts With**

Human

**Concentration**

1mg/ml (determined by BCA assay)

**Formulation**

Liquid in. Phosphate-Buffered Saline (pH 7.4) with 0.02% Sodium Azide, 10% glycerol

**Immunogen**

Recombinant human HMGB1 (1-215aa) purified from Baculovirus

**Isotype**

IgG2b kappa

**Purification Note**

By protein-G affinity chromatography

**Application**

ELISA, WB, IHC

**Usage**

The antibody has been tested by ELISA, Western blot and IHC analysis to assure specificity and reactivity. Since application varies, however, each investigation should be titrated by the reagent to obtain optimal results.

# Human HMG-1/HMGB1 antibody

Catalog Number: AHM0915

## Storage

Can be stored at +2C to +8C for 1 week. For long term storage, aliquot and store at -20C to -80C. Avoid repeated freezing and thawing cycles.

## BACKGROUND

### Description

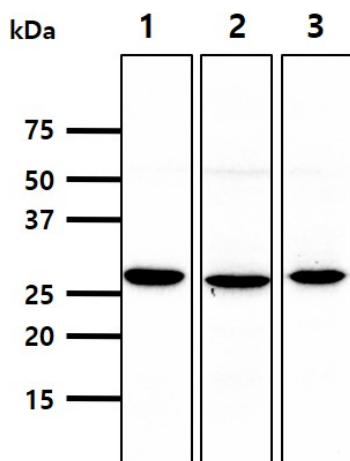
High mobility group box1 protein (HMGB1) is a very abundant chromatin-binding protein residing in the eukaryotic cell nucleus and acting in the assembly of nucleoprotein complexes. Inside the cell, HMGB1 binds to DNA and has a role in transcriptional regulation. Outside the cell, HMGB1 acts as a cytokine and has activities that resemble those of tumor necrosis factor.

### General References

Palumbo R J, et al., (2004) Cell Biol. Feb 2 164(3).  
Andersson U, et al., (2002) Leukoc Biol. Dec. 72(6):1084-91.

## DATA

### Western blot analysis (WB)



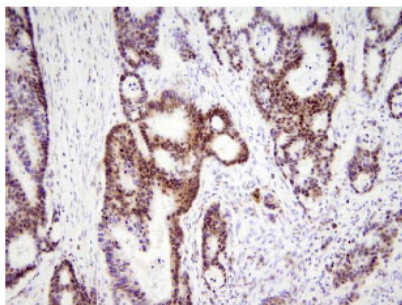
The cell lysates (40ug) were resolved by SDS-PAGE, transferred to PVDF membrane and probed with anti-human HMGB1 antibody (1:1000). Proteins were visualized using a goat anti-mouse secondary antibody conjugated to HRP and an ECL detection system.

Lane 1.: Jurkat cell lysate

Lane 1.: K562 cell lysate

Lane 1.: MCF7 cell lysate

### Immunohistochemistry (IHC)



Paraffin embedded sections of human colon cancer tissue were incubated with anti-human HMGB1 (1:200) for 2 hours at room temperature. Antigen retrieval was performed in 0.1M sodium citrate buffer and detected using Diaminobenzidine (DAB)