

# Human beta-Actin antibody

Catalog Number: ATGA0570

## PRODUCT INFORMATION

---

**Catalog number**

ATGA0570

**Clone No.**

AT4G6

**Product type**

Monoclonal Antibody

**UnitProt No.**

P60709

**NCBI Accession No.**

NP\_001092

**Alternative Names**

Actin, cytoplasmic 1, Beta-actin

## PRODUCT SPECIFICATION

---

**Antibody Host**

Mouse

**Reacts With**

Human

**Concentration**

0.2mg/ml (determined by BCA assay)

**Formulation**

Liquid in. Phosphate-Buffered Saline (pH 7.4) with 0.02% Sodium Azide, 10% glycerol

**Immunogen**

Recombinant human ACTB (1-375aa) purified from E. coli

**Isotype**

IgG1 kappa

**Purification Note**

By protein-A affinity chromatography

**Application**

ELISA, WB, ICC/IF

**Usage**

The antibody has been tested by ELISA, Western blot and ICC/IF analysis to assure specificity and reactivity. Since application varies, however, each investigation should be titrated by the reagent to obtain optimal results.

**Storage**

# Human beta-Actin antibody

Catalog Number: ATGA0570

Can be stored at +2C to +8C for 1 week. For long term storage, aliquot and store at -20C to -80C. Avoid repeated freezing and thawing cycles.

## BACKGROUND

### Description

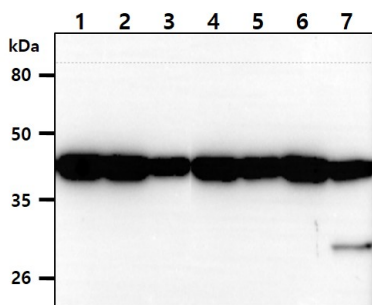
Beta-actin (human gene and protein symbol ACTB/ACTB) is one of six different actin isoforms which have been identified in humans. This is one of the two nonmuscle cytoskeletal actins. Actins are highly conserved proteins that are involved in cell motility, structure and integrity. Alpha actins are a major constituent of the contractile apparatus.

### General References

Gunning PW., et al. (2015) Journal of Cell Science. 128(11): 2009-2019.  
Hanukoglu I., et al. (1983) Journal of Molecular Biology. 163(4): 673-8.

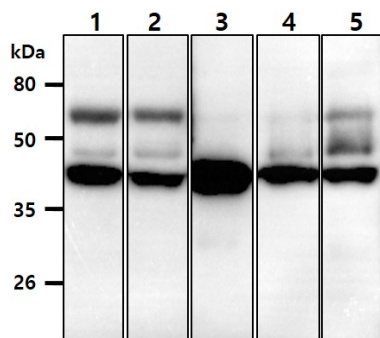
## DATA

### Western blot analysis (WB)



The cell lysates (40ug) were resolved by SDS-PAGE, transferred to PVDF membrane and probed with anti-human ACTB antibody (1:1000). Proteins were visualized using a goat anti-mouse secondary antibody conjugated to HRP and an ECL detection system.

Lane 1.: HeLa cell lysate  
Lane 2.: Jurkat cell lysate  
Lane 3.: PC3 cell lysate  
Lane 4.: HepG2 cell lysate  
Lane 5.: MCF7 cell lysate  
Lane 6.: U87-MG cell lysate  
Lane 7.: NIH-3T3 cell lysate

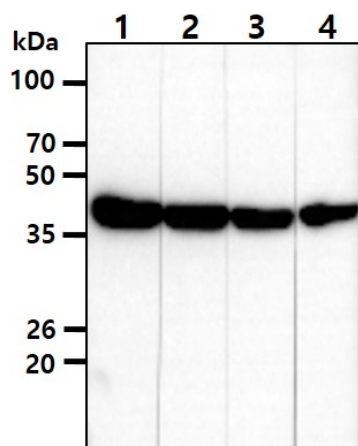


The mouse tissue lysates (40ug) were resolved by SDS-PAGE, transferred to PVDF membrane and probed with anti-human ACTB antibody (1:1000). Proteins were visualized using a goat anti-mouse secondary antibody conjugated to HRP and an ECL detection system.

Lane 1.: Kidney tissue lysate  
Lane 2.: Liver tissue lysate  
Lane 3.: Spleen tissue lysate  
Lane 4.: Bone marrow tissue lysate  
Lane 5.: Stomach tissue lysate

## Human beta-Actin antibody

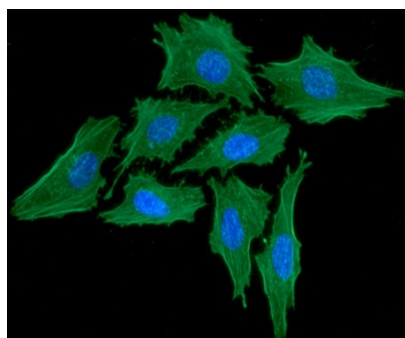
Catalog Number: ATGA0570



The HeLa cell lysates (40ug) were resolved by SDS-PAGE, transferred to PVDF membrane and probed with anti-human ACTB antibody. Proteins were visualized using a goat anti-mouse secondary antibody conjugated to HRP and an ECL detection system.

Lane 1.: ACTB antibody 1:1000  
Lane 2.: ACTB antibody 1:3000  
Lane 3.: ACTB antibody 1:5000  
Lane 4.: ACTB antibody 1:10000

### Immunocytochemistry/Immunofluorescence (ICC/IF)



ICC/IF analysis of ACTB in HeLa cells. The cell was stained with ATGA0570 (1:100). The secondary antibody (green) was used Alexa Fluor 488. DAPI was stained the cell nucleus (blue).