

Human Cellubrevin/VAMP-3 antibody

Catalog Number: AVA0922

PRODUCT INFORMATION

Catalog number

AVA0922

Clone No.

AT4G9

Product type

Monoclonal Antibody

UnitProt No.

Q15836

NCBI Accession No.

NP_004772

Alternative Names

Vesicle-associated membrane protein 3, VAMP 3, CEB, Synaptobrevin-3, Cellubrevin, Synaptobrevin 3, VAMP3, Vesicle associated membrane protein 3

PRODUCT SPECIFICATION

Antibody Host

Mouse

Reacts With

Human

Concentration

1mg/ml (determined by BCA assay)

Formulation

Liquid in. Phosphate-Buffered Saline (pH 7.4) with 0.02% Sodium Azide, 10% glycerol

Immunogen

Recombinant human cellubrevin (1-77aa) purified from E. coli

Isotype

IgG2b kappa

Purification Note

By protein-G affinity chromatography

Application

ELISA, WB, FACS

Usage

The antibody has been tested by ELISA, Western blot and Flow cytometry analysis to assure specificity and reactivity. Since application varies, however, each investigation should be titrated by the reagent to obtain optimal results.

Human Cellubrevin/VAMP-3 antibody

Catalog Number: AVA0922

Storage

Can be stored at +2C to +8C for 1 week. For long term storage, aliquot and store at -20C to -80C. Avoid repeated freezing and thawing cycles.

BACKGROUND

Description

Cellubrevin, also known as VAMP3, is a member of the Vamp/synaptobrevin family. Vamps, syntaxins, and the 25-kD synaptosomal-associated protein are the main components of a protein complex involved in the docking and/or fusion of synaptic vesicles with the presynaptic membrane. Cellubrevin is a vesicular soluble N-ethylmaleimide sensitive factor attachment protein receptor (v-SNARE) homologous to the neuronal synaptobrevins 1/2 and is also a substrate of tetanus neurotoxin.

General References

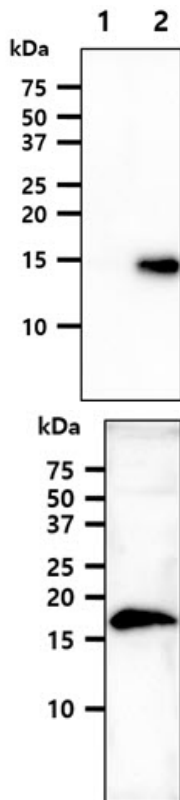
Proux-G V., et al. (2005) Proc Natl Acad Sci USA. 102(18):6362-6367.

Randhawa Vk., et al. (2000) Mol Cell Biol. 11(7):2403-2417.

Olson AL., et al. (1997) Mol Cell Biol. 17(5):2425-2435.

DATA

Western blot analysis (WB)



The cell lysates (40ug) were resolved by SDS-PAGE, transferred to PVDF membrane and probed with anti-human cellubrevin antibody (1:1000). Proteins were visualized using a goat anti-mouse secondary antibody conjugated to HRP and an ECL detection system.

Lane 1.: 293T cell lysate

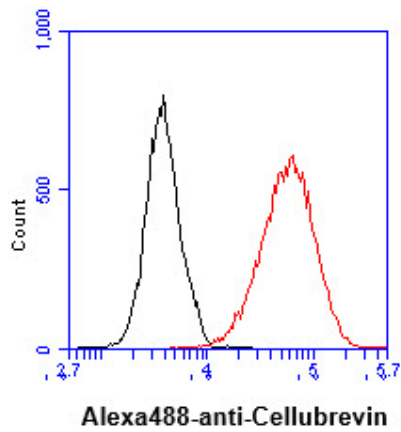
Lane 2.: Cellubrevin transfected 293T cell lysate

The mouse brain tissue lysate (40ug) was resolved by SDS-PAGE, transferred to PVDF membrane and probed with anti-human cellubrevin antibody (1:1000). Proteins were visualized using a goat anti-mouse secondary antibody conjugated to HRP and an ECL detection system.

Flow cytometry (FACS)

Human Cellubrevin/VAMP-3 antibody

Catalog Number: AVA0922



Flow cytometry analysis of Cellubrevin in HeLa cell line, staining at 2-5ug for 1×10^6 cells (red line). The secondary antibody used goat anti-mouse IgG Alexa fluor 488 conjugate. Isotype control antibody was mouse IgG (black line).