

# Human Cofilin 1/CFL1 antibody

Catalog Number: ACO0927

## PRODUCT INFORMATION

---

**Catalog number**

ACO0927

**Clone No.**

AT1C1

**Product type**

Monoclonal Antibody

**UnitProt No.**

P23528

**NCBI Accession No.**

NP\_005498

**Alternative Names**

18 kDa phosphoprotein(p18), CFL, CFL1, Cofilin 1, Cofilin 1 non muscle, Cofilin non muscle isoform, P18

## PRODUCT SPECIFICATION

---

**Antibody Host**

Mouse

**Reacts With**

Human

**Concentration**

1mg/ml (determined by BCA assay)

**Formulation**

Liquid in. Phosphate-Buffered Saline (pH 7.4) with 0.02% Sodium Azide, 10% glycerol

**Immunogen**

Recombinant human Cofilin 1 (1-166aa) purified from E. coli

**Isotype**

IgG1 kappa

**Purification Note**

By protein-G affinity chromatography

**Application**

ELISA, WB, ICC/IF

**Usage**

The antibody has been tested by ELISA, Western blot, ICC/IF and FACS analysis to assure specificity and reactivity. Since application varies, however, each investigation should be titrated by the reagent to obtain optimal results.

# Human Cofilin 1/CFL1 antibody

Catalog Number: ACO0927

## Storage

Can be stored at +2C to +8C for 1 week. For long term storage, aliquot and store at -20C to -80C. Avoid repeated freezing and thawing cycles.

## BACKGROUND

### Description

Cofilin is a family of actin-binding proteins which disassembles actin filaments. It is a widely distributed intracellular actin-modulating protein that binds and depolymerizes filamentous F-actin and inhibits the polymerization of monomeric G-actin in a pH-dependent manner. It is involved in the translocation of actin-cofilin complex from cytoplasm to nucleus.

### General References

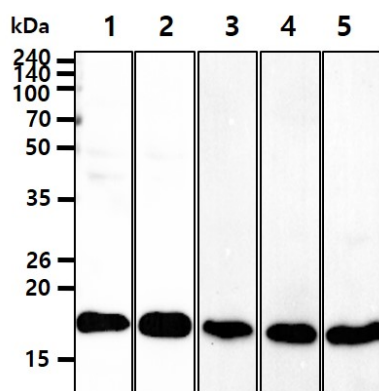
Mannherz H.G., et al. (2007) J Mol Biol 366(3):745-755.

Olsen J.V., et al. (2006) Cell 127(3):635-648.

Yang N., et al. (1998) Nature 393(6687):809-812.

## DATA

### Western blot analysis (WB)



The lysates (40ug) were resolved by SDS-PAGE, transferred to PVDF membrane and probed with anti-human Cofilin 1(1:1000) antibody. Proteins were visualized using a goat anti-mouse secondary antibody conjugated to HRP and an ECL detection system.

Lane 1.: HeLa cell lysate

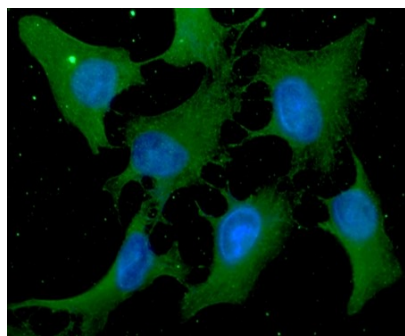
Lane 2.: K562 cell lysate

Lane 3.: MCF7 cell lysate

Lane 4.: LnCap cell lysate

Lane 5.: PC3 cell lysate

### Immunocytochemistry/Immunofluorescence (ICC/IF)



ICC/IF analysis of Cofilin1 in HeLa cells. The cell was stained with ACO0927(1:100). The secondary antibody (green) was used Alexa Fluor 488. DAPI was stained the cell nucleus (blue).