

# Human OSTF1 antibody

Catalog Number: ATGA0125

## PRODUCT INFORMATION

---

**Catalog number**

ATGA0125

**Clone No.**

AT9G4

**Product type**

Monoclonal Antibody

**UnitProt No.**

Q92882

**NCBI Accession No.**

AAH07459

**Alternative Names**

Osteoclast stimulating factor 1, SH3P2, OSF, Osteoclast stimulating factor 1

## PRODUCT SPECIFICATION

---

**Antibody Host**

Mouse

**Reacts With**

Human

**Concentration**

1mg/ml (determined by BCA assay)

**Formulation**

Liquid in. Phosphate-Buffered Saline (pH 7.4) with 0.02% Sodium Azide, 10% glycerol

**Immunogen**

Recombinant human OSTF1 (1-217aa) purified from E. coli

**Isotype**

IgG2a kappa

**Purification Note**

By protein-G affinity chromatography

**Application**

ELISA, WB, ICC/IF, FACS

**Usage**

The antibody has been tested by ELISA, Western blot, ICC/IF and FACS analysis to assure specificity and reactivity. Since application varies, however, each investigation should be titrated by the reagent to obtain optimal results.

# Human OSTF1 antibody

Catalog Number: ATGA0125

## Storage

Can be stored at +2C to +8C for 1 week. For long term storage, aliquot and store at -20C to -80C. Avoid repeated freezing and thawing cycles.

## BACKGROUND

### Description

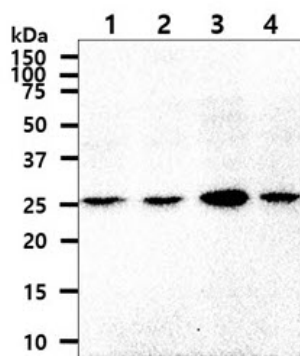
Osteoclast-stimulating factor (OSTF1) is an intracellular signaling protein, highly expressed by osteoclasts (OCL). Indirectly, it enhances osteoclast (OCL) formation and bone resorption through a cellular signal transduction cascade by possibly interacting with c-Src or other c-Src-related proteins. OSTF1 contains a short proline-rich N-terminal region, an SH3 domain, three ankyrin repeats and an aspartate-rich C-terminal region, suggesting that it is potentially involved in protein-protein interactions.

### General References

Kurihara N., et al. (2001) J. Biol. Chem. 276(44): 41035-9.  
Reddy S., et al. (1999) J Cell Physiol. 177(4): 636-45.

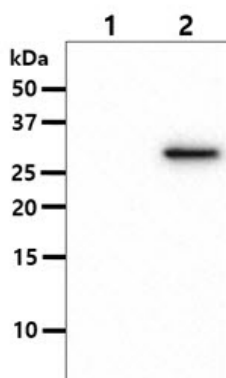
## DATA

### Western blot analysis (WB)



The cell lysates (40ug) were resolved by SDS-PAGE, transferred to PVDF membrane and probed with anti-human OSTF1 antibody (1:1000). Proteins were visualized using a goat anti-mouse secondary antibody conjugated to HRP and an ECL detection system.

Lane 1.: HepG2 cell lysate  
Lane 2.: MCF7 cell lysate  
Lane 3.: Jurkat cell lysate  
Lane 4.: LnCap cell lysate



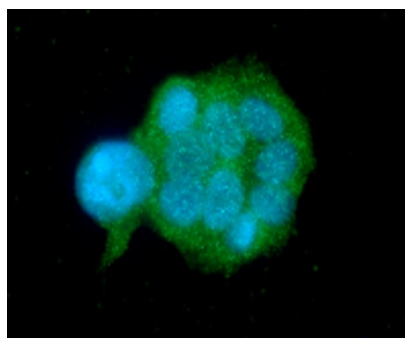
The cell lysates (10ug) were resolved by SDS-PAGE, transferred to PVDF membrane and probed with anti-human OSTF1 antibody (1:1000). Proteins were visualized using a goat anti-mouse secondary antibody conjugated to HRP and an ECL detection system.

Lane 1.: 293T cell lysate  
Lane 2.: OSTF1 Transfected 293T cell lysate

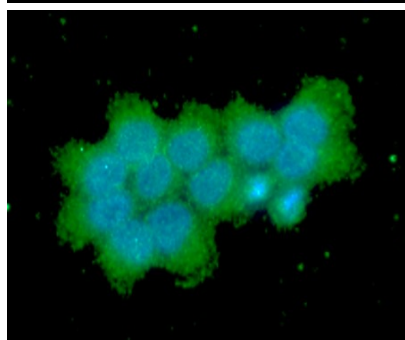
### Immunocytochemistry/Immunofluorescence (ICC/IF)

## Human OSTF1 antibody

Catalog Number: ATGA0125

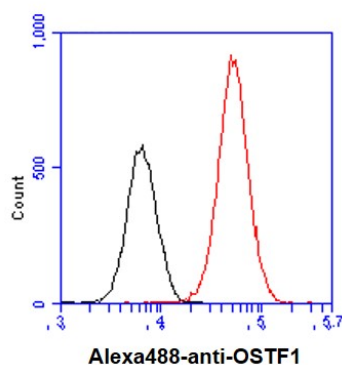


ICC/IF analysis of OSTF1 in MCF7 cells. The cell was stained with ATGA0125 (1:100). The secondary antibody (green) was used Alexa Fluor 488. DAPI was stained the cell nucleus (blue).



ICC/IF analysis of OSTF1 in A431 cells. The cell was stained with ATGA0125 (1:100). The secondary antibody (green) was used Alexa Fluor 488. DAPI was stained the cell nucleus (blue).

### Flow cytometry (FACS)



Flow cytometry analysis of OSTF1 in HeLa cell line, staining at 2-5ug for  $1 \times 10^6$  cells (red line). The secondary antibody used goat anti-mouse IgG Alexa fluor 488 conjugate. Isotype control antibody was mouse IgG (black line).