

Human ADRM1 antibody

Catalog Number: ATGA0127

PRODUCT INFORMATION

Catalog number

ATGA0127

Clone No.

AT34C2

Product type

Monoclonal Antibody

UnitProt No.

Q16186

NCBI Accession No.

NP_783163

Alternative Names

Proteasomal ubiquitin receptor ADRM1, ARM1, GP110, Rpn13

PRODUCT SPECIFICATION

Antibody Host

Mouse

Reacts With

Human

Concentration

1mg/ml (determined by BCA assay)

Formulation

Liquid in. Phosphate-Buffered Saline (pH 7.4) with 0.02% Sodium Azide, 10% glycerol

Immunogen

Recombinant human ADRM1 (1-407aa) purified from E. coli

Isotype

IgG2b kappa

Purification Note

By protein-G affinity chromatography

Application

ELISA, WB, ICC/IF, FACS

Usage

The antibody has been tested by ELISA, Western blot, ICC/IF and FACS analysis to assure specificity and reactivity. Since application varies, however, each investigation should be titrated by the reagent to obtain optimal results.

Human ADRM1 antibody

Catalog Number: ATGA0127

Storage

Can be stored at +2C to +8C for 1 week. For long term storage, aliquot and store at -20C to -80C. Avoid repeated freezing and thawing cycles.

BACKGROUND

Description

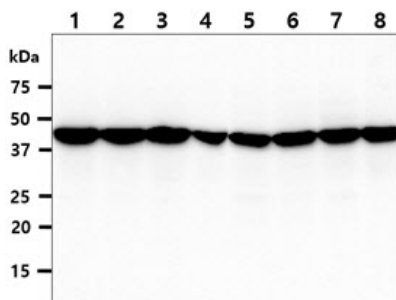
ADRM1, also known as proteasomal ubiquitin receptor ADRM1, functions as a proteasomal ubiquitin receptor. This protein is an integral plasma membrane protein which promotes cell adhesion. ADRM1 is thought to undergo O-linked glycosylation. Expression of this gene has been shown to be induced by gamma interferon in some cancer cells.

General References

Hamazaki J., et al. (2006) EMBO J. 25: 4524-4536.
Qiu X.-B., et al. (2006) EMBO J. 25: 5742-5753.

DATA

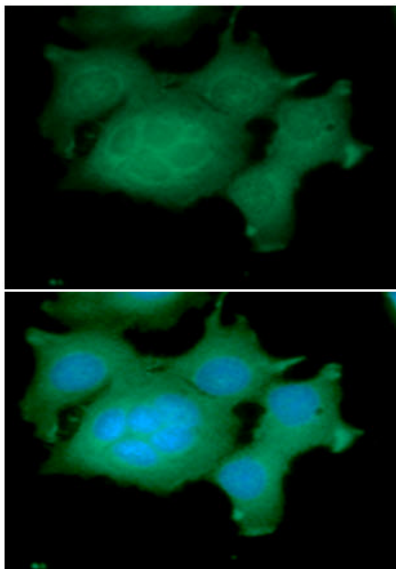
Western blot analysis (WB)



The cell lysates (40ug) were resolved by SDS-PAGE, transferred to PVDF membrane and probed with anti-human ADRM1 antibody (1:1000). Proteins were visualized using a goat anti-mouse secondary antibody conjugated to HRP and an ECL detection system.

Lane 1.: MCF7 cell lysate
Lane 2.: HeLa cell lysate
Lane 3.: K562 cell lysate
Lane 4.: PC3 cell lysate
Lane 5.: 293T cell lysate
Lane 6.: HepG2 cell lysate
Lane 7.: Jurkat cell lysate
Lane 8.: U87MG cell lysate

Immunocytochemistry/Immunofluorescence (ICC/IF)

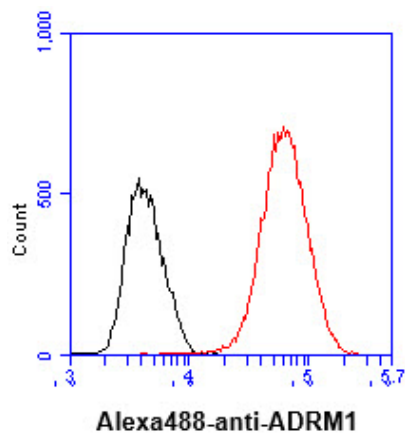


ICC/IF analysis of ADRM1 in MCF7 cells. The cell was stained with ATGA0127 (1:100). The secondary antibody (green) was used Alexa Fluor 488. DAPI was stained the cell nucleus (blue).

Human ADRM1 antibody

Catalog Number: ATGA0127

Flow cytometry (FACS)



Flow cytometry analysis of ADRM1 in MCF7 cell line, staining at 2-5ug for 1×10^6 cells (red line). The secondary antibody used goat anti-mouse IgG Alexa fluor 488 conjugate. Isotype control antibody was mouse IgG (black line).