

# Human KLF4 antibody

Catalog Number: ATGA0129

## PRODUCT INFORMATION

---

**Catalog number**

ATGA0129

**Clone No.**

AT4E6

**Product type**

Monoclonal Antibody

**UnitProt No.**

O43474

**NCBI Accession No.**

NP\_004226.3

**Alternative Names**

krueppel-like factor 4, EZF, GKLF

## PRODUCT SPECIFICATION

---

**Antibody Host**

Mouse

**Reacts With**

Human

**Concentration**

1mg/ml (determined by BCA assay)

**Formulation**

Liquid in. Phosphate-Buffered Saline (pH 7.4) with 0.02% Sodium Azide, 10% glycerol

**Immunogen**

Recombinant human KLF4 (1-170aa) purified from E. coli

**Isotype**

IgG1 kappa

**Purification Note**

By protein-G affinity chromatography

**Application**

ELISA, WB, FACS

**Usage**

The antibody has been tested by ELISA, Western blot and FACS analysis to assure specificity and reactivity. Since application varies, however, each investigation should be titrated by the reagent to obtain optimal results.

**Storage**

# Human KLF4 antibody

Catalog Number: ATGA0129

Can be stored at +2C to +8C for 1 week. For long term storage, aliquot and store at -20C to -80C. Avoid repeated freezing and thawing cycles.

## BACKGROUND

### Description

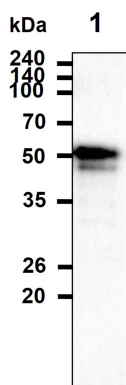
KLF4, which is also known as the gut-enriched kruppel-like factor (GkLF), is a zinc finger-containing transcription factor that belongs to the kruppel-like family of transcription factors. KLF4 plays important roles during the proliferation and differentiation of epithelial cells. Especially, it is found predominantly in gut and has been shown to be expressed during growth arrest. KLF4 is also involved in cell cycle control since expression of KLF4 inhibits DNA synthesis by blocking the G1/S phase of the cell cycle.

### General References

Yan FF, et al., (2008) *Med Hypotheses*. 70(4):845-7.  
 Cho YG, et al., (2007) *APMIS*. 115(7):802-8.

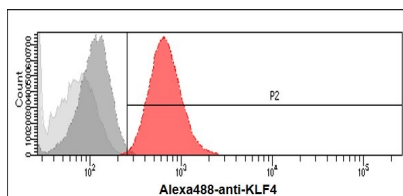
## DATA

### Western blot analysis (WB)

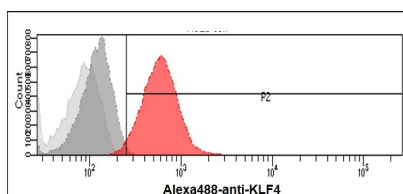


The recombinant protein (20ug) was resolved by SDS-PAGE, transferred to PVDF membrane and probed with anti-human KLF4 antibody (1:3000). Proteins were visualized using a goat anti-mouse secondary antibody conjugated to HRP and an ECL detection system. Lane 1.: Recombinant human KLF4 protein

### Flow cytometry (FACS)



Flow cytometry analysis of KLF4 in A549 cells. The cell was stained with ATGA0129 at 2-5ug for  $1 \times 10^6$  cells (red). A Goat anti mouse IgG (Alexa fluor 488) was used as the secondary antibody. Mouse monoclonal IgG was used as the isotype control (dark gray), cells without incubation with primary and secondary antibody was used as the negative control (light gray).



Flow cytometry analysis of KLF4 in HeLa cells. The cell was stained with ATGA0129 at 2-5ug for  $1 \times 10^6$  cells (red). A Goat anti mouse IgG (Alexa fluor 488) was used as the secondary antibody. Mouse monoclonal IgG was used as the isotype control (dark gray), cells without incubation with primary and secondary antibody was used as the negative control (light gray).