

Human 14-3-3 theta antibody

Catalog Number: ATGA0132

PRODUCT INFORMATION

Catalog number

ATGA0132

Clone No.

AT1A1

Product type

Monoclonal Antibody

UnitProt No.

P27348

NCBI Accession No.

NP_006817

Alternative Names

YWHAQ, 14-3-3 protein T-cell, 14-3-3 protein tau, Protein HS1, Tyrosine 3-monooxygenase/tryptophan 5-monooxygenase activation protein theta, Protein theta

PRODUCT SPECIFICATION

Antibody Host

Mouse

Reacts With

Human

Concentration

1mg/ml (determined by BCA assay)

Formulation

Liquid in. Phosphate-Buffered Saline (pH 7.4) with 0.02% Sodium Azide, 10% glycerol

Immunogen

Recombinant human 14-3-3 tau (1-245aa) purified from E. coli

Isotype

IgG1 kappa

Purification Note

By protein-G affinity chromatography

Application

ELISA, WB, ICC/IF

Usage

The antibody has been tested by ELISA, Western blot, and ICC/IF analysis to assure specificity and reactivity. Since application varies, however, each investigation should be titrated by the reagent to obtain optimal results.

Human 14-3-3 theta antibody

Catalog Number: ATGA0132

Storage

Can be stored at +2C to +8C for 1 week. For long term storage, aliquot and store at -20C to -80C. Avoid repeated freezing and thawing cycles.

BACKGROUND

Description

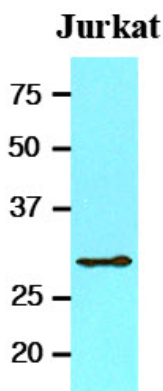
The 14-3-3 family of proteins plays a key regulatory role in signal transduction, checkpoint control, apoptotic and nutrient-sensing pathways. 14-3-3 proteins are highly conserved and ubiquitously expressed. There are at least seven isoforms, beta, gamma, epsilon, sigma, zeta, tau and ttau that have been identified in mammals. The 14-3-3 tau, a subtype of the 14-3-3 family of proteins, was found in T Cells, brain and testes. This 14-3-3 tau is upregulated in patients with amyotrophic lateral sclerosis.

General References

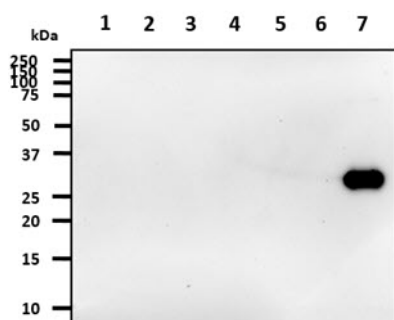
Liu YC, et al., (1996) J Biol Chem 271:14591-14595.
 Xiao B, et al., (1995) Nature 376:188-191.

DATA

Western blot analysis (WB)



The cell lysate of Jurkat (20ug) was resolved by SDS-PAGE, transferred to NC membrane and probed with anti-human 14-3-3 tau (1:1000). Proteins were visualized using a goat anti-mouse secondary antibody conjugated to HRP and an ECL detection system.

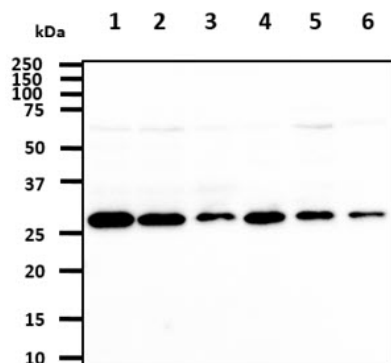


The recombinant proteins (50ng) were resolved by SDS-PAGE, transferred to PDVF membrane and probed with anti-human 14-3-3 tau antibody (1:1000). Proteins were visualized using a goat anti-mouse secondary antibody conjugated to HRP and an ECL detection system.

- Lane 1. : Recombinant Human YWHAZ
- Lane 2. : Recombinant Human YWHAB
- Lane 3. : Recombinant Human YWHAE
- Lane 4. : Recombinant Human YWHAH
- Lane 5. : Recombinant Human YWHAG
- Lane 6. : Recombinant Human SFN
- Lane 7. : Recombinant Human YWHAQ

Human 14-3-3 theta antibody

Catalog Number: ATGA0132



The cell lysates (40ug) were resolved by SDS-PAGE, transferred to PDVF membrane and probed with anti-human 14-3-3 tau antibody (1:1000). Proteins were visualized using a goat anti-mouse secondary antibody conjugated to HRP and an ECL detection system.

Lane 1. : MDA-MB-21 cell lysate

Lane 2. : HeLa cell lysate

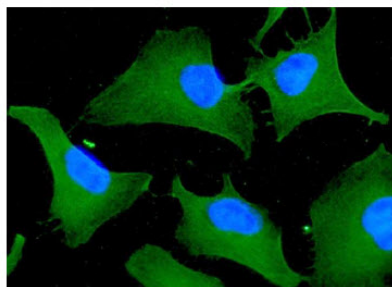
Lane 3. : A431 cell lysate

Lane 4. : NIH3T3 cell lysate

Lane 5. : 293T cell lysate

Lane 6. : HepG2 cell lysate

Immunocytochemistry/Immunofluorescence (ICC/IF)



ICC/IF analysis of 14-3-3 tau in HeLa cells. The cell was stained with ATGA0132 (1:100). The secondary antibody (green) was used Alexa Fluor 488. DAPI was stained the cell nucleus (blue).