

Human Retinol Binding Protein 4/RBP4 antibody

Catalog Number: ATGA0136

PRODUCT INFORMATION

Catalog number

ATGA0136

Clone No.

AT2B4

Product type

Monoclonal Antibody

UnitProt No.

P02753

NCBI Accession No.

NP_006735

Alternative Names

Plasma retinol-binding protein, PRBP, RBP

PRODUCT SPECIFICATION

Antibody Host

Mouse

Reacts With

Human

Concentration

1mg/ml (determined by BCA assay)

Formulation

Liquid in. Phosphate-Buffered Saline (pH 7.4) with 0.02% Sodium Azide, 10% glycerol

Immunogen

Recombinant human RBP4 (19-201aa) purified from E. coli

Isotype

IgG1 kappa

Purification Note

By protein-G affinity chromatography

Application

ELISA, WB, ICC/IF, FACS

Usage

The antibody has been tested by ELISA, Western blot, ICC/IF and FACS analysis to assure specificity and reactivity. Since application varies, however, each investigation should be titrated by the reagent to obtain optimal results.

Human Retinol Binding Protein 4/RBP4 antibody

Catalog Number: ATGA0136

Storage

Can be stored at +2C to +8C for 1 week. For long term storage, aliquot and store at -20C to -80C. Avoid repeated freezing and thawing cycles.

BACKGROUND

Description

Retinol binding protein 4 (RBP4) belongs to the lipocalin family and is the specific carrier for retinol in the blood. This protein was found to be expressed and secreted by adipose tissue, and was strongly associated with insulin resistance. It delivers retinol from the liver stores to the peripheral tissues. In plasma, the RBP-retinol complex interacts with transthyretin which prevents its loss by filtration through the kidney glomeruli.

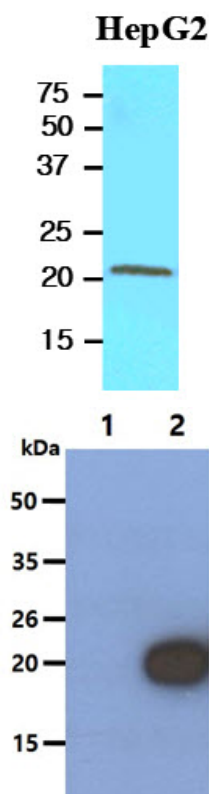
General References

Tan Bk, et al., (2007) J Clin Endocrinol Metab 92(7):2590-2597.

Yao-Borengasser A, et al., (2007) J Clin Endocrinol Metab 92(7):2430-2432.

DATA

Western blot analysis (WB)



The HepG2 cell lysate (60ug) was resolved by SDS-PAGE, transferred to NC membrane and probed with anti-human RBP4 antibody (1:500). Proteins were visualized using a goat anti-mouse secondary antibody conjugated to HRP and an ECL detection system.

The Cell lysates (10ug) were resolved by SDS-PAGE, transferred to PVDF membrane and probed with anti-human RBP4 antibody (1:500). Proteins were visualized using a goat anti-mouse secondary antibody conjugated to HRP and an ECL detection system.

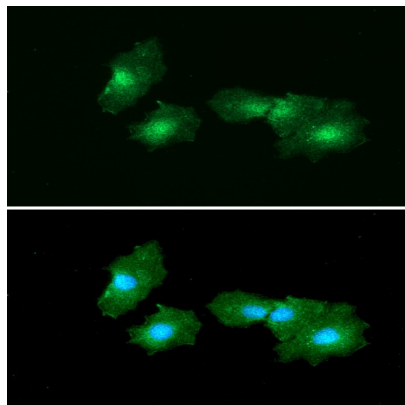
Lane 1.: 293T cell lysate

Lane 2.: RBP4 Transfected 293T cell lysate

Immunocytochemistry/Immunofluorescence (ICC/IF)

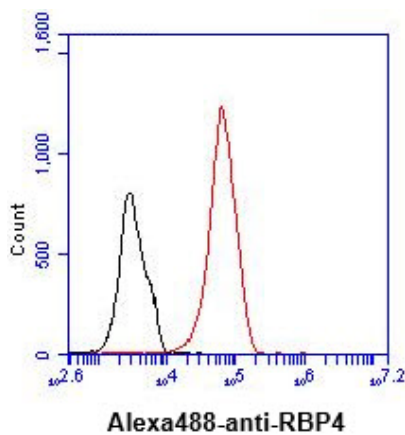
Human Retinol Binding Protein 4/RBP4 antibody

Catalog Number: ATGA0136



ICC/IF analysis of RBP4 in Hep3B cells line, stained with DAPI (Blue) for nucleus staining and monoclonal anti-human RBP4 antibody (1:100) with goat anti-mouse IgG-Alexa fluor 488 conjugate (Green).

Flow cytometry (FACS)



Flow cytometry analysis of RBP4 in HepG2 cell line, staining at 2-5ug for 1×10^6 cells (red line). The secondary antibody used goat anti-mouse IgG Alexa fluor 488 conjugate. Isotype control antibody was mouse IgG (black line).