

# Human MAT2A antibody

Catalog Number: ATGA0138

## PRODUCT INFORMATION

---

**Catalog number**

ATGA0138

**Clone No.**

AT3A2

**Product type**

Monoclonal Antibody

**UnitProt No.**

P31153

**NCBI Accession No.**

NP\_005902

**Alternative Names**

Methionine adenosyltransferase II alpha, MATA2, MATII, SAMS2, Methionine adenosyltransferase II alpha, MAT2A, Methionine adenosyltransferase II, alpha AdoMet synthetase, AdoMet synthetase 2, AMS 2, MAT II, MATA 2, Methionine adenosyltransferase, Methionine adenosyltransferase 2, SAMS 2, Methionine adenosyltransferase II, S adenosylmethionine synthetase gamma form, S adenosylmethionine synthetase isoform type 2, S-adenosylmethionine synthetase isoform type 2

## PRODUCT SPECIFICATION

---

**Antibody Host**

Mouse

**Reacts With**

Human

**Concentration**

1mg/ml (determined by BCA assay)

**Formulation**

Liquid in. Phosphate-Buffered Saline (pH 7.4) with 0.02% Sodium Azide, 10% glycerol

**Immunogen**

Recombinant human MAT2A (1-395aa) purified from E. coli

**Isotype**

IgG2b kappa

**Purification Note**

By protein-G affinity chromatography

**Application**

ELISA, WB, ICC/IF, IHC

**Usage**

The antibody has been tested by ELISA, Western blot, ICC/IF and IHC analysis to assure specificity and reactivity.

# Human MAT2A antibody

Catalog Number: ATGA0138

Since application varies, however, each investigation should be titrated by the reagent to obtain optimal results.

## Storage

Can be stored at +2C to +8C for 1 week. For long term storage, aliquot and store at -20C to -80C. Avoid repeated freezing and thawing cycles.

## BACKGROUND

### Description

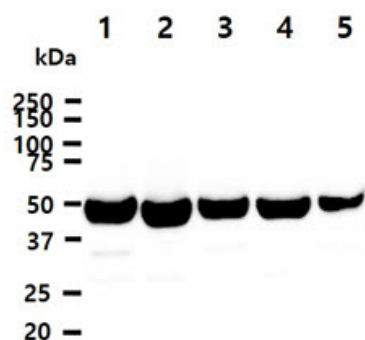
Methionine adenosyltransferase II (MAT II) is a key enzyme in cellular metabolism and catalyzes the formation of S-adenosylmethionine (SAME) from L-methionine and ATP. MAT2A is expressed in extrahepatic tissues. In liver, MAT2A expression associates with growth, dedifferentiation, and cancer.

### General References

Ramani K, et al., (2008) Hepatology 47(2):521-531.  
Chen H, et al., (2007) Gastroenterology 133(1):207-218.

## DATA

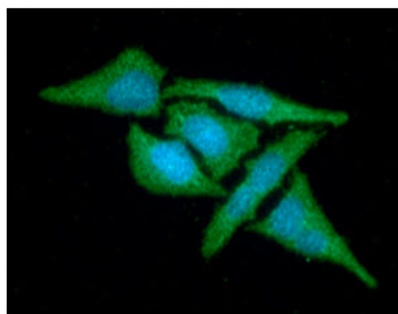
### Western blot analysis (WB)



The cell lysates(40ug) were resolved by SDS-PAGE, transferred to PVDF membrane and probed with anti-human MAT2A antibody (1:1000). Proteins were visualized using a goat anti-mouse secondary antibody conjugated to HRP and an ECL detection system.

Lane 1.: HeLa cell lysate  
Lane 2.: Ramos cell lysate  
Lane 3.: 293T cell lysate  
Lane 4.: Jurkat cell lysate  
Lane 5.: NIH-3T3 cell lysate

### Immunocytochemistry/Immunofluorescence (ICC/IF)

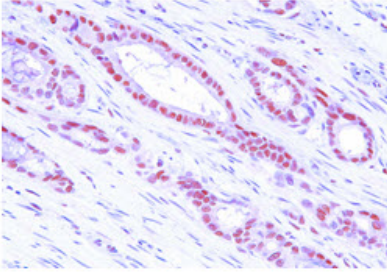


ICC/IF analysis of MAT2A in HeLa cells. The cell was stained with ATGA0138 (1:100). The secondary antibody (green) was used Alexa Fluor 488. DAPI was stained the cell nucleus (blue).

### Immunohistochemistry (IHC)

## Human MAT2A antibody

Catalog Number: ATGA0138



Human colon cancer tissue

Paraffin embedded sections of human colon cancer tissue were incubated with anti-human MAT2A (1:50) for 2 hours at room temperature. Antigen retrieval was performed in 0.1M sodium citrate buffer and detected using Diaminobenzidine (DAB)