

Human Cyclophilin F/PPIF antibody

Catalog Number: ATGA0139

PRODUCT INFORMATION

Catalog number

ATGA0139

Clone No.

AT1F5

Product type

Monoclonal Antibody

UnitProt No.

P30405

NCBI Accession No.

NP_005720

Alternative Names

peptidylprolyl isomerase F, Peptidyl-prolyl cis-trans isomerase F mitochondrial, PPIase F, Cyclophilin D, CyP-D, CypD, Cyclophilin F, Mitochondrial cyclophilin, CyP-M, Rotamase F

PRODUCT SPECIFICATION

Antibody Host

Mouse

Reacts With

Human

Concentration

1mg/ml (determined by BCA assay)

Formulation

Liquid in. Phosphate-Buffered Saline (pH 7.4) with 0.02% Sodium Azide, 10% glycerol

Immunogen

Recombinant human PPIF (30-207aa) purified from E. coli

Isotype

IgG2b kappa

Purification Note

By protein-G affinity chromatography

Application

ELISA, WB, ICC/IF, IHC

Usage

The antibody has been tested by ELISA, Western blot, ICC/IF and IHC analysis to assure specificity and reactivity. Since application varies, however, each investigation should be titrated by the reagent to obtain optimal results.

Human Cyclophilin F/PPIF antibody

Catalog Number: ATGA0139

Storage

Can be stored at +2C to +8C for 1 week. For long term storage, aliquot and store at -20C to -80C. Avoid repeated freezing and thawing cycles.

BACKGROUND

Description

Cyclophilin F (also known as Peptidylprolyl isomerase F, PPIF) is a member of peptidyl-prolyl cis-transisomerase family. They are highly-conserved cytoplasmic enzymes that accelerate protein folding. This protein is part of the mitochondrial permeability transition pore in the inner mitochondrial membrane. Activation of this pore is thought to be involved in the induction of apoptotic and necrotic cell death.

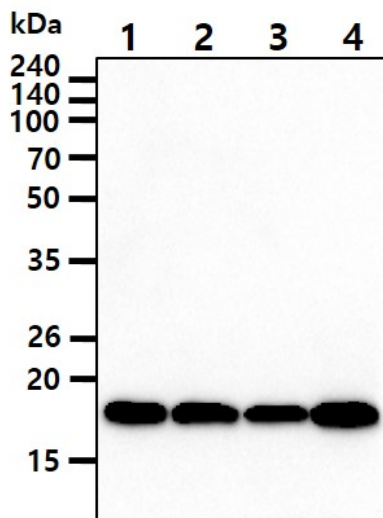
General References

Bowles KR, et al., (2000) Genomics 67(2):109-127

Bergsma DJ, et al., (1991) J Biol Chem 266(34):23204-23214

DATA

Western blot analysis (WB)



The cell lysates(40ug) were resolved by SDS-PAGE, transferred to PVDF membrane and probed with anti-human PPIF antibody (1:1000). Proteins were visualized using a goat anti-mouse secondary antibody conjugated to HRP and an ECL detection system.

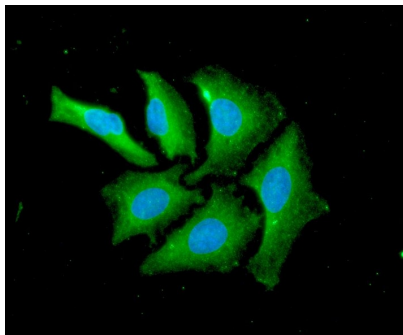
Lane 1.: 293T cell lysate

Lane 2.: HepG2 cell lysate

Lane 3.: MCF7 cell lysate

Lane 4.: PC3 cell lysate

Immunocytochemistry/Immunofluorescence (ICC/IF)

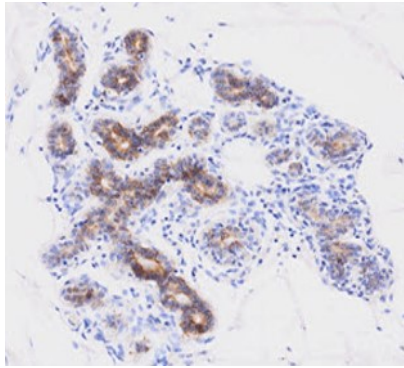
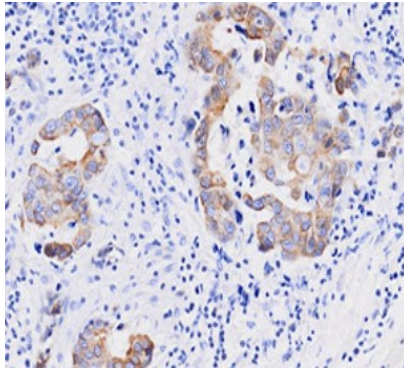


ICC/IF analysis of PPIF in HeLa cells. The cell was stained with ATGA0139 (1:100). The secondary antibody (green) was used Alexa Fluor 488. DAPI was stained the cell nucleus (blue).

Immunohistochemistry (IHC)

Human Cyclophilin F/PPIF antibody

Catalog Number: ATGA0139



Paraffin embedded sections of human breast cancer tissue were incubated with anti-human PPIF (1:50) for 2 hours at room temperature. Antigen retrieval was performed in 0.1M sodium citrate buffer and detected using Diaminobenzidine (DAB).