

Human Casein kinase 1 alpha/CSNK1A1 antibody

Catalog Number: ATGA0149

PRODUCT INFORMATION

Catalog number

ATGA0149

Clone No.

AT2E2

Product type

Monoclonal Antibody

UnitProt No.

P48729

NCBI Accession No.

NP_001883

Alternative Names

Casein kinase 1 alpha 1, CK1, CK1a, CK1alpha, CKIa, CKIalpha, Clock regulator kinase

PRODUCT SPECIFICATION

Antibody Host

Mouse

Reacts With

Human

Concentration

1mg/ml (determined by BCA assay)

Formulation

Liquid in. Phosphate-Buffered Saline (pH 7.4) with 0.02% Sodium Azide, 10% glycerol

Immunogen

Recombinant human Casein Kinase 1 alpha (1-337aa) purified from E. coli

Isotype

IgG2b kappa

Purification Note

By protein-G affinity chromatography

Application

ELISA, WB, ICC/IF

Usage

The antibody has been tested by ELISA, Western blot and ICC/IF analysis to assure specificity and reactivity. Since application varies, however, each investigation should be titrated by the reagent to obtain optimal results.

Storage

Human Casein kinase 1 alpha/CSNK1A1 antibody

Catalog Number: ATGA0149

Can be stored at +2C to +8C for 1 week. For long term storage, aliquot and store at -20C to -80C. Avoid repeated freezing and thawing cycles.

BACKGROUND

Description

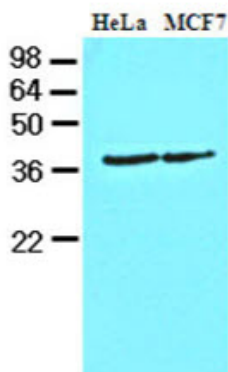
Casein Kinase 1 alpha belongs to the protein kinase superfamily, CK1 Ser/Thr protein kinase family, Casein kinase I subfamily. CK1 isoforms (alpha, beta, gamma, delta, epsilon) and their splice variants are involved in diverse cellular processes including membrane trafficking, circadian rhythm, cell cycle progression, chromosome segregation, apoptosis and cellular differentiation. Perhaps it can phosphorylate a large number of proteins and is involved in Wnt signaling where it phosphorylates CTNNB1 on Ser45. Casein kinase 1 alpha also interacts with the Axin complex

General References

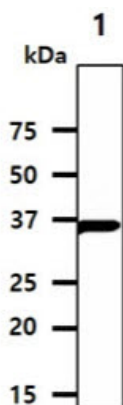
Knippschild U, et al., (2005) *Onkologie*. 28(10):508-14.
Kato M., (2007) *Clin Cancer Res*. 13(14):4042-5.

DATA

Western blot analysis (WB)



The cell lysates of HeLa and MCF7(40ug) were resolved by SDS-PAGE, transferred to PVDF membrane and probed with anti-human Casein Kinase 1 alpha antibody (1:1000). Proteins were visualized using a goat anti-mouse secondary antibody conjugated to HRP and an ECL detection system.

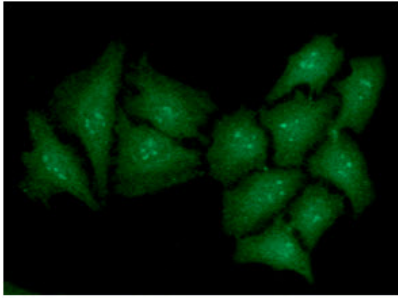


The cell lysate(40ug) was resolved by SDS-PAGE, transferred to PVDF membrane and probed with anti-human Casein Kinase 1 alpha antibody (1:1000). Proteins were visualized using a goat anti-mouse secondary antibody conjugated to HRP and an ECL detection system. Lane 1.: Jurkat cell lysate

Immunocytochemistry/Immunofluorescence (ICC/IF)

Human Casein kinase 1 alpha/CSNK1A1 antibody

Catalog Number: ATGA0149



ICC/IF analysis of Casein Kinase 1 alpha in HeLa cells. The cell was stained with ATGA0149 (1:100). The secondary antibody (green) was used Alexa Fluor 488. DAPI was stained the cell nucleus (blue).

