

# Human LITAF antibody

Catalog Number: ATGA0152

## PRODUCT INFORMATION

---

**Catalog number**

ATGA0152

**Clone No.**

AT1F9

**Product type**

Monoclonal Antibody

**UnitProt No.**

Q99732

**NCBI Accession No.**

NP\_004853

**Alternative Names**

lipopolysaccharide-induced TNF factor, PIG7, SIMPLE, FLJ38636, TP5317

## PRODUCT SPECIFICATION

---

**Antibody Host**

Mouse

**Reacts With**

Human

**Concentration**

1mg/ml (determined by BCA assay)

**Formulation**

Liquid in. Phosphate-Buffered Saline (pH 7.4) with 0.02% Sodium Azide, 10% glycerol

**Immunogen**

Recombinant human LITAF (1-161aa) purified from E. coli

**Isotype**

IgG2b kappa

**Purification Note**

By protein-G affinity chromatography

**Application**

ELISA, WB, ICC/IF

**Usage**

The antibody has been tested by ELISA, Western blot and ICC/IF analysis to assure specificity and reactivity. Since application varies, however, each investigation should be titrated by the reagent to obtain optimal results.

**Storage**

# Human LITAF antibody

Catalog Number: ATGA0152

Can be stored at +2C to +8C for 1 week. For long term storage, aliquot and store at -20C to -80C. Avoid repeated freezing and thawing cycles.

## BACKGROUND

### Description

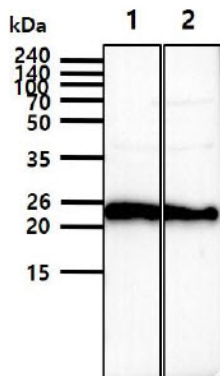
Lipopolysaccharide-induced tumor necrosis factor-alpha factor (LITAF) mediates the expression of inflammatory cytokines such as TNF-alpha in Lipopolysaccharide-induced processes. LITAF binds to STAT6B, a member of the STAT6 family forming a complex on the TNF-alpha promoter that modulates TNF activity. High levels of expression of LITAF mRNA have been observed predominantly in the placenta, peripheral blood leukocytes, lymph nodes and spleen.

### General References

- Atucchi A, et al., (2006) Inflamm Bowel Dis 13(1):120-121.
- Tang X, et al., (2005) Proc Natl Acad Sci USA 102(14):5132-5137.
- Tang X, et al., (2003) Proc Natl Acad Sci USA 100(7):4096-4101.

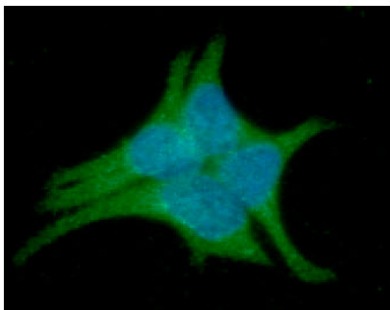
## DATA

### Western blot analysis (WB)



The cell lysates(40ug) were resolved by SDS-PAGE, transferred to PVDF membrane and probed with anti-human LITAF antibody (1:1000). Proteins were visualized using a goat anti-mouse secondary antibody conjugated to HRP and an ECL detection system.  
Lane 1.: HeLa cell lysate  
Lane 2.: HepG2 cell lysate

### Immunocytochemistry/Immunofluorescence (ICC/IF)



ICC/IF analysis of LITAF in LnCap cells. The cell was stained with ATGA0152 (1:100). The secondary antibody (green) was used Alexa Fluor 488. DAPI was stained the cell nucleus (blue).