

Human RNH1 antibody

Catalog Number: ATGA0154

PRODUCT INFORMATION

Catalog number

ATGA0154

Clone No.

AT1H23

Product type

Monoclonal Antibody

UnitProt No.

P13489

NCBI Accession No.

NP_002930

Alternative Names

ribonuclease/angiogenin inhibitor 1, ribonuclease/angiogenin inhibitor, RAI

PRODUCT SPECIFICATION

Antibody Host

Mouse

Reacts With

Human

Concentration

1mg/ml (determined by BCA assay)

Formulation

Liquid in. Phosphate-Buffered Saline (pH 7.4) with 0.02% Sodium Azide, 10% glycerol

Immunogen

Recombinant Ribonuclease inhibitor 1(RNH1) (7-461aa) purified from E. coli

Isotype

IgG2a kappa

Purification Note

By protein-G affinity chromatography

Application

ELISA, WB, ICC/IF

Usage

The antibody has been tested by ELISA, Western blot and ICC/IF analysis to assure specificity and reactivity. Since application varies, however, each investigation should be titrated by the reagent to obtain optimal results.

Storage

Human RNH1 antibody

Catalog Number: ATGA0154

Can be stored at +2C to +8C for 1 week. For long term storage, aliquot and store at -20C to -80C. Avoid repeated freezing and thawing cycles.

BACKGROUND

Description

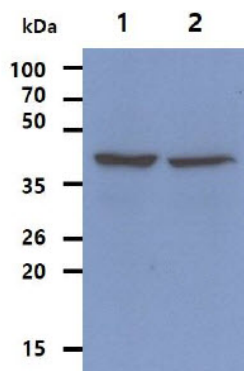
Ribonuclease inhibitor 1 (RNH1) the placental ribonuclease inhibitor, is an acid protein with a molecular weight of 50 kDa. RNH1 is a member of a family of proteinaceous cytoplasmic RNase inhibitors that are expressed in many tissues and bind to both intracellular and extracellular RNases in the cytosol. RNH1 is a role in abolishing the ribonucleolytic and angiogenic activities of angiogenin.

General References

- Park J.H., et al., (2008) Cytotechnology 57(1):93-99.
- Johnson R.J., et al., (2007) J Mol Biol 368(2):434-449.
- Fu P, et al., (2005) Cancer Gene Ther 12(3):268-275.

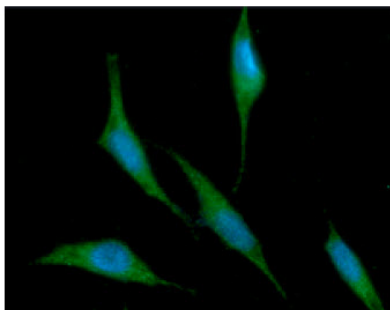
DATA

Western blot analysis (WB)



The cell lysates(40ug) were resolved by SDS-PAGE, transferred to PVDF membrane and probed with anti-human RNH1 antibody (1:500). Proteins were visualized using a goat anti-mouse secondary antibody conjugated to HRP and an ECL detection system.
Lane 1.: Jurkat cell lysate
Lane 2.: HepG2 cell lysate

Immunocytochemistry/Immunofluorescence (ICC/IF)



ICC/IF analysis of RNH1 in PC3 cells. The cell was stained with ATGA0154 (1:100). The secondary antibody (green) was used Alexa Fluor 488. DAPI was stained the cell nucleus (blue).