

Human HAX-1 antibody

Catalog Number: ATGA0156

PRODUCT INFORMATION

Catalog number

ATGA0156

Clone No.

AT3C5

Product type

Monoclonal Antibody

UnitProt No.

O00165

NCBI Accession No.

NP_006109

Alternative Names

HCLS1 associated protein X-1, HS1BP1, HCLSBP1, HCLS1 (and PKD2) associated protein

PRODUCT SPECIFICATION

Antibody Host

Mouse

Reacts With

Human

Concentration

1mg/ml (determined by BCA assay)

Formulation

Liquid in. Phosphate-Buffered Saline (pH 7.4) with 0.02% Sodium Azide, 10% glycerol

Immunogen

Recombinant human HAX1 (1-279aa) purified from E. coli

Isotype

IgG2b kappa

Purification Note

By protein-G affinity chromatography

Application

ELISA, WB, ICC/IF

Usage

The antibody has been tested by ELISA, Western blot and ICC/IF analysis to assure specificity and reactivity. Since application varies, however, each investigation should be titrated by the reagent to obtain optimal results.

Storage

Human HAX-1 antibody

Catalog Number: ATGA0156

Can be stored at +2C to +8C for 1 week. For long term storage, aliquot and store at -20C to -80C. Avoid repeated freezing and thawing cycles.

BACKGROUND

Description

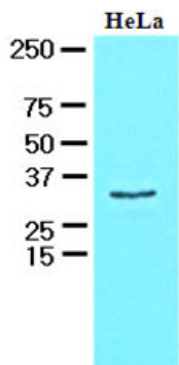
HAX1 is known to associate with hematopoietic cell-specific Lyn substrate 1 (HS1), one of the substrates of receptor-coupled tyrosine kinases activated during clonal expansion and deletion in lymphoid cells. It also interacts with the product of the polycystic kidney disease 2 (PKD2) gene and with the F-actin-binding protein, cortactin. HAX1 is also reported to bind to hairpin structures in vimentin and DNA polymerase beta mRNAs, so may play a role in mRNA stability and transport. It may also function in promoting cell survival. Defects in HAX1 are the cause of autosomal recessive severe congenital neutropenia 3 (SCN3) also called Kostmann disease.

General References

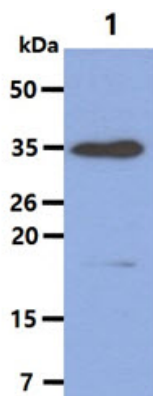
Klein C, et al., (2007) Nat Genet. 39(1):86-92.
Yin H, et al., (2001) Cytokine. 15(3):122-37.

DATA

Western blot analysis (WB)



The cell lysate of HeLa(30ug) was resolved by SDS-PAGE, transferred to PVDF membrane and probed with anti-human HAX-1 antibody (1:1000). Proteins were visualized using a goat anti-mouse secondary antibody conjugated to HRP and an ECL detection system.

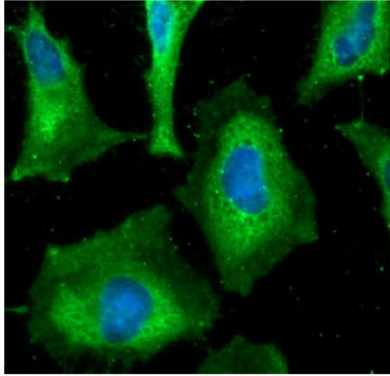


The cell lysate(40ug) was resolved by SDS-PAGE, transferred to PVDF membrane and probed with anti-human HAX-1 antibody (1:1000). Proteins were visualized using a goat anti-mouse secondary antibody conjugated to HRP and an ECL detection system.
Lane 1.: Raji cell lysate

Immunocytochemistry/Immunofluorescence (ICC/IF)

Human HAX-1 antibody

Catalog Number: ATGA0156



ICC/IF analysis of HAX-1 in HeLa cells. The cell was stained with ATGA0156 (1:100). The secondary antibody (green) was used Alexa Fluor 488. DAPI was stained the cell nucleus (blue).