

Human BRCC36/BRCC3 antibody

Catalog Number: ATGA0159

PRODUCT INFORMATION

Catalog number

ATGA0159

Clone No.

AT3B1

Product type

Monoclonal Antibody

UnitProt No.

P46736

NCBI Accession No.

NP_077308

Alternative Names

BRCA1/BRCA2-containing complex subunit 3, chromosome X open reading frame 53, C6.1A

PRODUCT SPECIFICATION

Antibody Host

Mouse

Reacts With

Human

Concentration

1mg/ml (determined by BCA assay)

Formulation

Liquid in. Phosphate-Buffered Saline (pH 7.4) with 0.02% Sodium Azide, 10% glycerol

Immunogen

Recombinant BRCC36 (1-316aa) purified from E. coli

Isotype

IgG1 kappa

Purification Note

By protein-G affinity chromatography

Application

ELISA, WB, ICC/IF

Usage

The antibody has been tested by ELISA, Western blot and ICC/IF analysis to assure specificity and reactivity. Since application varies, however, each investigation should be titrated by the reagent to obtain optimal results.

Storage

Human BRCC36/BRCC3 antibody

Catalog Number: ATGA0159

Can be stored at +2C to +8C for 1 week. For long term storage, aliquot and store at -20C to -80C. Avoid repeated freezing and thawing cycles.

BACKGROUND

Description

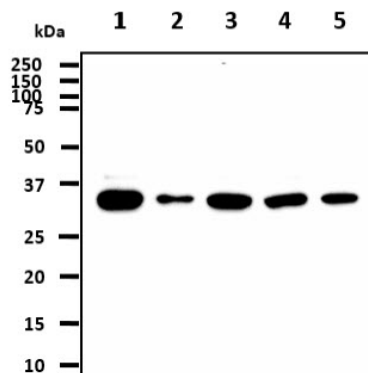
BRCC36 (BRCA1/BRCA2-containing complex, subunit 36) is a holoenzyme complex containing BRCA1, BRCA2. BRCC36 is an ubiquitin E3 ligase complex that has a role in DNA repair and enhances cellular survival following DNA damage. This protein is also thought to be involved in the cellular response to ionizing radiation and progression through the G2/M checkpoint.

General References

Wang Bin, et al., (2007) Proc Natl Acad Sci USA 104(52):20759-20763.
Chen Xiaowei, et al., (2006) Cancer Research 66:5039-5046.
Dong Y, et al., (2003) Mol Cell 12(5):1087-1099.

DATA

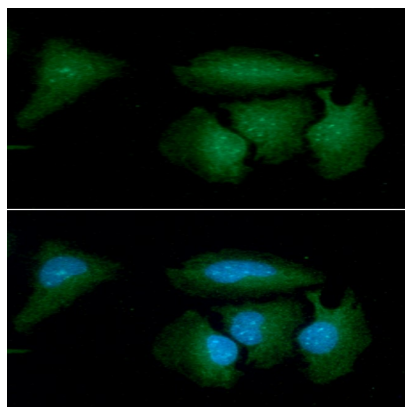
Western blot analysis (WB)



The cell lysates(40ug) were resolved by SDS-PAGE, transferred to PVDF membrane and probed with anti-human BRCC36 antibody (1:1000). Proteins were visualized using a goat anti-mouse secondary antibody conjugated to HRP and an ECL detection system.

Lane 1.: HeLa cell lysate
Lane 2.: HepG2 cell lysate
Lane 3.: 293T cell lysate
Lane 4.: MCF7 cell lysate
Lane 5.: NIH3T3 cell lysate

Immunocytochemistry/Immunofluorescence (ICC/IF)



ICC/IF analysis of BRCC36 in HeLa cells. The cell was stained with ATGA0159 (1:100). The secondary antibody (green) was used Alexa Fluor 488. DAPI was stained the cell nucleus (blue).