

Human E2-EPF/UBE2S antibody

Catalog Number: ATGA0165

PRODUCT INFORMATION

Catalog number

ATGA0165

Clone No.

AT2C12

Product type

Monoclonal Antibody

UnitProt No.

Q16763

NCBI Accession No.

NP_055316.2

Alternative Names

Ubiquitin-conjugating enzyme E2S, E2-EPF, E2EPF, EPF5, Ubiquitin-conjugating enzyme S, UBE2S, Ubiquitin carrier protein S, Ubiquitin protein ligase S, Ubiquitin conjugating enzyme E2 24 kD, Ubiquitin conjugating enzyme E2S

PRODUCT SPECIFICATION

Antibody Host

Mouse

Reacts With

Human

Concentration

1mg/ml (determined by BCA assay)

Formulation

Liquid in. Phosphate-Buffered Saline (pH 7.4) with 0.02% Sodium Azide, 10% glycerol

Immunogen

Recombinant human UBE2S (1-222aa) purified from E. coli

Isotype

IgG2a kappa

Purification Note

By protein-G affinity chromatography

Application

ELISA, WB, ICC/IF, FACS

Usage

The antibody has been tested by ELISA, Western blot, ICC/IF and FACS analysis to assure specificity and reactivity. Since application varies, however, each investigation should be titrated by the reagent to obtain optimal results.

Human E2-EPF/UBE2S antibody

Catalog Number: ATGA0165

Storage

Can be stored at +2C to +8C for 1 week. For long term storage, aliquot and store at -20C to -80C. Avoid repeated freezing and thawing cycles.

BACKGROUND

Description

UBE2S, also known as ubiquitin-conjugating enzyme E2S, is a member of the ubiquitin-conjugating enzyme family. This protein is able to form a thiol ester linkage with ubiquitin in an ubiquitin activating enzyme-dependent manner, a characteristic property of ubiquitin carrier proteins. It catalyzes the covalent attachment of ubiquitin to other proteins.

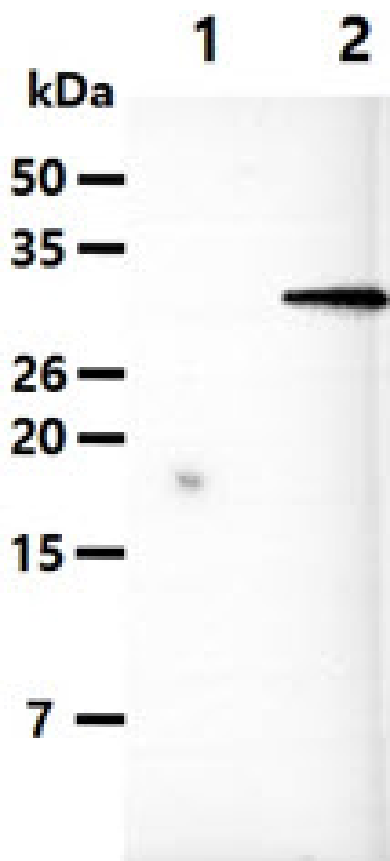
General References

Ye Y, et al. (2009) Nat Rev Mol Cell Biol, 10(11):755-64.

Windheim M, et al. (2008) Biochem J, 409(3):723-9.

DATA

Western blot analysis (WB)



The cell lysates(10ug) were resolved by SDS-PAGE, transferred to PVDF membrane and probed with anti-human UBE2S antibody (1:1000). Proteins were visualized using a goat anti-mouse secondary antibody conjugated to HRP and an ECL detection system.

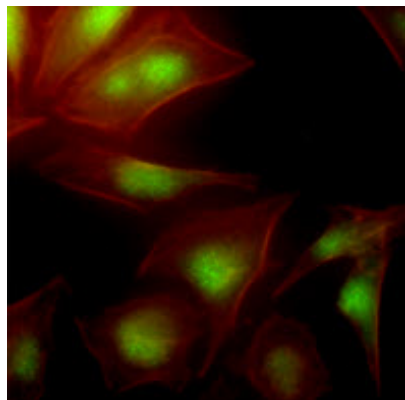
Lane 1.: 293T cell lysate

Lane 2.: UBE2S Transfected 293T cell lysate

Immunocytochemistry/Immunofluorescence (ICC/IF)

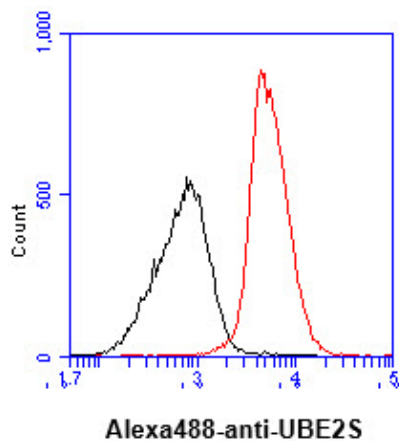
Human E2-EPF/UBE2S antibody

Catalog Number: ATGA0165



Immunofluorescence of human HeLa cells stained with Phalloidin-TRITC (Red) for Actin staining and monoclonal anti-human UBE2S antibody (1:500) with Alexa 488 (Green).

Flow cytometry (FACS)



Flow cytometry analysis of UBE2S in Jurkat cell line, staining at 2-5ug for 1×10^6 cells (red line). The secondary antibody used goat anti-mouse IgG Alexa fluor 488 conjugate. Isotype control antibody was mouse IgG (black line).