

# Human pan-RAS antibody

Catalog Number: ATGA0573

## PRODUCT INFORMATION

---

**Catalog number**

ATGA0573

**Clone No.**

AT2G9

**Product type**

Monoclonal antibody

**UnitProt No.**

P01111

**NCBI Accession No.**

NP\_002515

**Alternative Names**

Neuroblastoma RAS viral (v-ras) oncogene homolog, GTPase NRas, HRAS1, ALPS4, N-ras, NRAS1, NS6, Neuroblastoma RAS viral (v-ras) oncogene homolog OTTMuSP00000023521, AV095280, N ras, N rasprotein part 4, Neuroblastoma RAS viral (v ras) oncogene homolog, OTTHuMP00000013879, Transforming protein N Ras, v ras neuroblastoma RAS viral oncogene homolog

**Additional Information**

This product was produced from tissue culture supernatant. Ras Antibody detects endogenous levels of total K-Ras, H-Ras, and N-Ras(cell signaling).

## PRODUCT SPECIFICATION

---

**Antibody Host**

Mouse

**Reacts With**

Human

**Concentration**

1mg/ml (determined by BCA assay)

**Formulation**

Liquid in. Phosphate-Buffered Saline (pH 7.4) with 0.02% Sodium Azide, 10% glycerol

**Immunogen**

Recombinant human NRAS (1-186aa) purified from E. coli

**Isotype**

IgG2a kappa

**Purification Note**

By protein-A affinity chromatography

**Application**

ELISA, WB, FACS

# Human pan-RAS antibody

Catalog Number: ATGA0573

## Usage

The antibody has been tested by ELISA, Western blot and FACS analysis to assure specificity and reactivity. Since application varies, however, each investigation should be titrated by the reagent to obtain optimal results.

## Storage

Can be stored at +2C to +8C for 1 week. For long term storage, aliquot and store at -20C to -80C. Avoid repeated freezing and thawing cycles.

## BACKGROUND

### Description

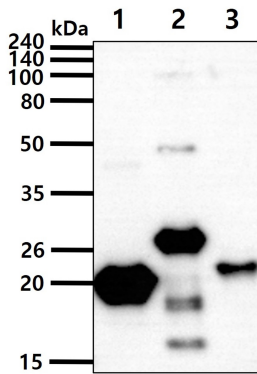
The Ras protein is a subfamily of small GTPases that are involved in signal transduction. They are activated by ligand-binding receptor tyrosine kinases such as EGFR, PDGFR, CSF and FGF. These kinases transiently convert RAS-GDP (inactive form) to RAS-GTP, the active form of RAS. The main genes are HRAS, NRAS and KRAS.

### General References

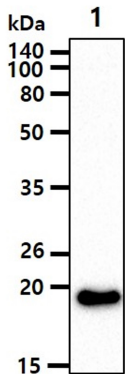
- Rocks O, et al. (2006). Current Opinion in Cell Biology 18 (4): 351-7.
- Wennerberg K, et al. (March 2005). J. Cell. Sci. 118 (Pt 5): 843-6.
- Rotblat B, et al. (2008). Methods Enzymol 439: 467-89.

## DATA

### Western blot analysis (WB)



The recombinant proteins (50ng) were resolved by SDS-PAGE, transferred to PVDF membrane and probed with anti-human RAS antibody (1:1000). Proteins were visualized using a goat anti-mouse secondary antibody conjugated to HRP and an ECL detection system.  
Lane 1.: Recombinant human NRAS protein  
Lane 2.: Recombinant human KRAS protein  
Lane 3.: Recombinant human HRAS protein



The cell lysate(40ug) was resolved by SDS-PAGE, transferred to PVDF membrane and probed with anti-human RAS antibody (1:1000). Proteins were visualized using a goat anti-mouse secondary antibody conjugated to HRP and an ECL detection system.  
Lane 1.: 293T cell lysate

### Flow cytometry (FACS)

## Human pan-RAS antibody

Catalog Number: ATGA0573

Flow cytometry analysis of RAS in HeLa cells. The cell was stained with ATGA0573 at 2-5ug for  $1 \times 10^6$  cells (red). A Goat anti mouse IgG (Alexa fluor 488) was used as the secondary antibody. Mouse monoclonal IgG was used as the isotype control (dark gray), cells without incubation with primary and secondary antibody was used as the negative control (light gray).

