

# Human beta-II Tubulin antibody

Catalog Number: ATGA0187

## PRODUCT INFORMATION

---

**Catalog number**

ATGA0187

**Clone No.**

AT5B3

**Product type**

Monoclonal Antibody

**UnitProt No.**

Q9BVA1

**NCBI Accession No.**

NP\_821080

**Alternative Names**

TUBB2B, Tubulin beta 2B class lib, Tubulin beta 2b

## PRODUCT SPECIFICATION

---

**Antibody Host**

Mouse

**Reacts With**

Human

**Concentration**

1mg/ml (determined by BCA assay)

**Formulation**

Liquid in. Phosphate-Buffered Saline (pH 7.4) with 0.02% Sodium Azide, 10% glycerol

**Immunogen**

Recombinant human beta-Tubulin (1-445aa) purified from E. coli

**Isotype**

IgG2a kappa

**Purification Note**

By protein-G affinity chromatography

**Application**

ELISA, WB, IHC

**Usage**

The antibody has been tested by ELISA, Western blot and IHC analyses to assure specificity and reactivity. Since applications vary, however, each investigation should be titrated by a reagent to obtain optimal results.

**Storage**

# Human beta-II Tubulin antibody

Catalog Number: ATGA0187

Can be stored at +2C to +8C for 1 week. For long term storage, aliquot and store at -20C to -80C. Avoid repeated freezing and thawing cycles.

## BACKGROUND

### Description

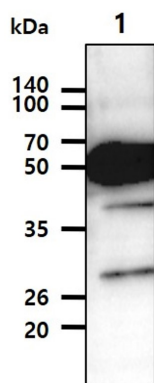
The protein encoded by this gene is a beta isoform of tubulin, which binds GTP and is a major component of microtubules. Multiple beta Tubulin isoforms have been characterized and are expressed in mammalian tissues. Tubulin is the major constituent of microtubules. It binds two moles of GTP, one at an exchangeable site on the beta chain and one at a non-exchangeable site on the alpha-chain. TUBB2b is mainly expressed in developing neurons with a dominant expression during the critical steps of corticogenesis. Also, TUBB2B is a new critical gene involved in neuronal migration. It is present in the nuclei and nucleoplasm, Defects in this gene are a cause of asymmetric polymicrogyria.

### General References

- Xavier Hubert Jaglin, et al. (2009) Nat Genet, 41(6):746-52.
- Bouwmeester T, et al. (2004) Nat Cell Bio, 6(2):97-105.
- Modig, C, et al. (1999) Cell Motil Cytoskeleton, 42(4): 315-330.

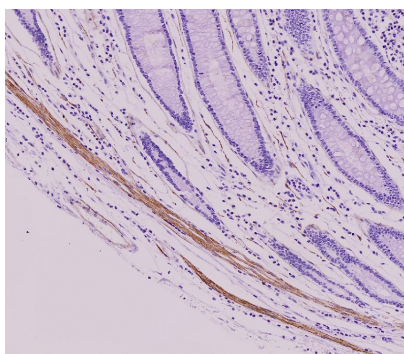
## DATA

### Western blot analysis (WB)



The tissue lysate(40ug) was resolved by SDS-PAGE, transferred to PVDF membrane and probed with anti-human beta-Tubulin antibody (1:1000). Proteins were visualized using a goat anti-mouse secondary antibody conjugated to HRP and an ECL detection system.  
Lane 1.: Mouse brain tissue lysate

### Immunohistochemistry (IHC)



Paraffin embedded sections of colorectal cancer tissue were incubated with anti-human beta-Tubulin antibody (1:50) for 2 hours at room temperature. Antigen retrieval was performed in 0.1M sodium citrate buffer and detected using Diaminobenzidine (DAB).