

Human Caveolin-1 antibody

Catalog Number: ATGA0195

PRODUCT INFORMATION

Catalog number

ATGA0195

Clone No.

AT4C1

Product type

Monoclonal Antibody

UnitProt No.

Q03135

NCBI Accession No.

NP_001744

Alternative Names

VIP 21, CAV, CAV 1, CAV1, caveolae protein 22 kD, caveolin 1 alpha isoform, caveolin 1 beta isoform, Caveolin 1 caveolae protein 22kDa, Caveolin1, cell growth-inhibiting protein 32, MSTP085, OTTHUMP00000025031, VIP 21, VIP21

PRODUCT SPECIFICATION

Antibody Host

Mouse

Reacts With

Human

Concentration

1mg/ml (determined by BCA assay)

Formulation

Liquid in. Phosphate-Buffered Saline (pH 7.4) with 0.02% Sodium Azide, 10% glycerol

Immunogen

Recombinant human CAV1 (1-104aa) purified from E. coli

Isotype

IgG2b kappa

Purification Note

By protein-G affinity chromatography

Application

ELISA, WB, ICC/IF

Usage

The antibody has been tested by ELISA, Western blot and ICC/IF analysis to assure specificity and reactivity. Since application varies, however, each investigation should be titrated by the reagent to obtain optimal results.

Human Caveolin-1 antibody

Catalog Number: ATGA0195

Storage

Can be stored at +2C to +8C for 1 week. For long term storage, aliquot and store at -20C to -80C. Avoid repeated freezing and thawing cycles.

BACKGROUND

Description

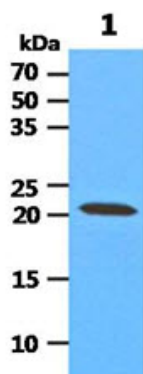
The identification of caveolin-1 (CAV1) as the main structural component of caveolae, together with the finding that CAV1 might serve as a molecular organizer for membrane multiprotein complexes involved in cellular traffic, endo-and transcytosis, cell adhesion and signal transduction prompted a new impulse in the research on these intracellular organells. One of the properties of CAV1 was its insolubility in cold non-ionic detergents together with apical markers in epithelial cell. Also, cholesterol is essential for caveolae formation and maintenance, and caveolae structure is highly sensitive to cholesterol depletion or treatment with cholesterol binding drugs. CAV1 tightly and specifically binds free cholesterol and artificial cholesterol containing vesicles.

General References

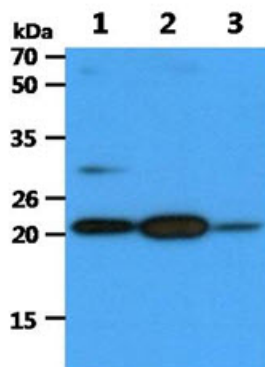
- Van Meer, G., et al. (2008) Nat Rev Mol Cell Biol. 9: 112-124.
- Todeschini, R.A. et al. (2008) Biochim Biophys Acta 1780: 421-433.
- Lajoie, P et al. (2007) J Cell Mol Med 11: 644-653.

DATA

Western blot analysis (WB)



The tissue lysate (40ug) was resolved by SDS-PAGE, transferred to PVDF membrane and probed with anti-human CAV1 antibody (1:1000). Proteins were visualized using a goat anti-mouse secondary antibody conjugated to HRP and an ECL detection system.
Lane 1. : Rat Brain lysate

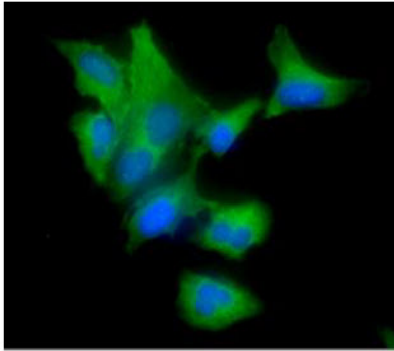


The tissue and cell lysates (40ug) were resolved by SDS-PAGE, transferred to PVDF membrane and probed with anti-human CAV1 antibody (1:1000). Proteins were visualized using a goat anti-mouse secondary antibody conjugated to HRP and an ECL detection system.
Lane 1. : Mouse Brain lysate
Lane 2. : Mouse Heart cell lysate
Lane 3. : A431 cell lysate

Immunocytochemistry/Immunofluorescence (ICC/IF)

Human Caveolin-1 antibody

Catalog Number: ATGA0195



ICC/IF analysis of CAV1 in A549 cells. The cell was stained with ATGA0195 (1:100). The secondary antibody (green) was used Alexa Fluor 488. DAPI was stained the cell nucleus (blue).