

Human beta-II Tubulin antibody

Catalog Number: ATGA0196

PRODUCT INFORMATION

Catalog number

ATGA0196

Clone No.

AT5B2

Product type

Monoclonal Antibody

UnitProt No.

Q9BVA1

NCBI Accession No.

NP_821080

Alternative Names

TUBB2B, Tubulin beta 2B class Iib, Tubulin beta 2b

PRODUCT SPECIFICATION

Antibody Host

Mouse

Reacts With

Human

Concentration

1mg/ml (determined by BCA assay)

Formulation

Liquid in. Phosphate-Buffered Saline (pH 7.4) with 0.02% Sodium Azide, 10% glycerol

Immunogen

Recombinant human beta-Tubulin (1-445aa) purified from E. coli

Isotype

IgG2b kappa

Purification Note

By protein-G affinity chromatography

Application

ELISA, WB, ICC/IF

Usage

The antibody has been tested by ELISA, Western blot and ICC/IF analysis to assure specificity and reactivity. Since application varies, however, each investigation should be titrated by the reagent to obtain optimal results.

Storage

Human beta-II Tubulin antibody

Catalog Number: ATGA0196

Can be stored at +4C For long term storage, aliquot and store at -20C. Avoid repeated freezing and thawing cycles.

BACKGROUND

Description

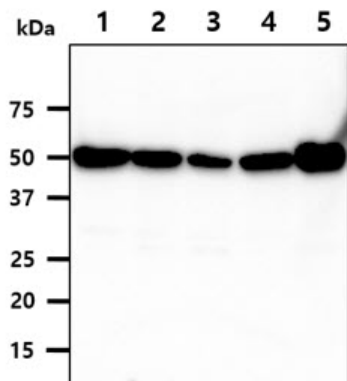
Tubulin is a major cytoskeleton component that has five distinct forms. Multiple beta Tubulin isoforms have been characterized and are expressed in mammalian tissues. Tubulin is the major constituent of microtubules. It binds two moles of GTP, one at an exchangeable site on the beta chain and one at a non-exchangeable site on the alpha-chain.

General References

- Xavier Hubert Jaglin, et al. (2009) Nat Genet, 41(6):746-52.
- Bouwmeester T, et al. (2004) Nat Cell Bio, 6(2):97-105.
- Modig, C, et al. (1999) Cell Motil Cytoskeleton, 42(4): 315-330.

DATA

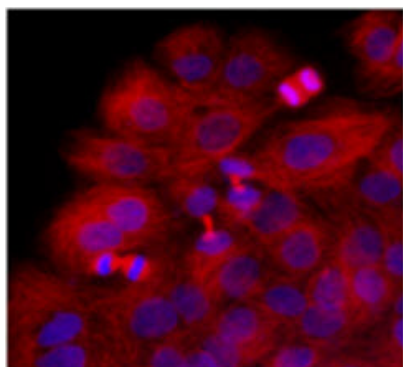
Western blot analysis (WB)



The cell lysates(40ug) and tissue lysates(35ug) were resolved by SDS-PAGE, transferred to PVDF membrane and probed with anti-human beta-Tubulin (1:5000). Proteins were visualized using a goat anti-mouse secondary antibody conjugated to HRP and an ECL detection system.

- Lane 1.: Jurkat cell lysate
- Lane 2.: A549 cell lysate
- Lane 3.: A431 cell lysate
- Lane 4.: HepG2 cell lysate
- Lane 5.: Mouse brain tissue lyate

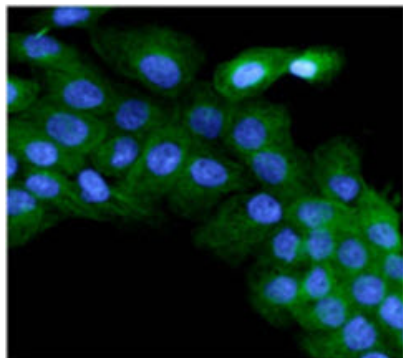
Immunocytochemistry/Immunofluorescence (ICC/IF)



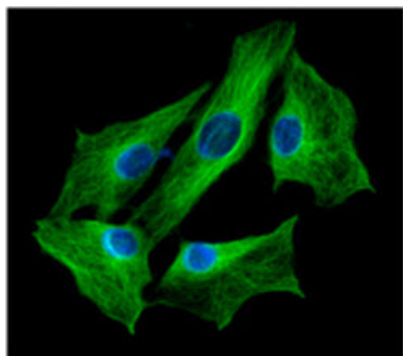
Immunofluorescence of HaCaT cells stained with Hoechst 3342 (Blue) for nucleus staining and monoclonal anti-human beta-Tubulin antibody (1:1000) with Texas Red (Red).

Human beta-II Tubulin antibody

Catalog Number: ATGA0196



Immunofluorescence of A431 cells stained with DAPI (Blue) for nucleus staining and monoclonal anti-human beta-Tubulin antibody (1:500) with Alexa Fluor 488 (Green).



Immunofluorescence of Balb/3T3 cells stained with DAPI (Blue) for nucleus staining and monoclonal anti-human beta-Tubulin antibody (1:200) with Alexa Fluor 488 (Green).