

# Human EGFR antibody

Catalog Number: ATGA0197

## PRODUCT INFORMATION

---

**Catalog number**

ATGA0197

**Clone No.**

AT6E3

**Product type**

Monoclonal Antibody

**UnitProt No.**

P00533

**NCBI Accession No.**

NP\_005219

**Alternative Names**

Epidermal growth factor receptor, ERBB, ERBB1, HER1, NISBD2, PIG61, mENA, ERRP, Proto-oncogene c-ErbB-1, Receptor tyrosine-protein kinase erbB-1, erythroblastic leukemia viral (v-erb-b) oncogene homolog (avian)

## PRODUCT SPECIFICATION

---

**Antibody Host**

Mouse

**Reacts With**

Human

**Concentration**

1mg/ml (determined by BCA assay)

**Formulation**

Liquid in. Phosphate-Buffered Saline (pH 7.4) with 0.02% Sodium Azide, 10% glycerol

**Immunogen**

Recombinant human EGFR (424-605aa) purified from E. coli

**Isotype**

IgG2b kappa

**Purification Note**

By protein-G affinity chromatography

**Application**

ELISA, WB, ICC/IF

**Usage**

The antibody has been tested by ELISA, Western blot and ICC/IF analysis to assure specificity and reactivity. Since application varies, however, each investigation should be titrated by the reagent to obtain optimal results.

# Human EGFR antibody

Catalog Number: ATGA0197

## Storage

Can be stored at +2C to +8C for 1 week. For long term storage, aliquot and store at -20C to -80C. Avoid repeated freezing and thawing cycles.

## BACKGROUND

---

### Description

Epidermal growth factor receptor (EGFR) is a 170 kDa membrane protein first identified as a binding partner of EGF. Also, EGFR phosphorylated itself (autophosphorylation) in response to EGF treatment. The overexpression of EGFR in various epithelial tumors was widely reported and it has been substantiated that deregulation of EGFR itself and its signaling pathways an important role in human cancers.

### General References

Cohen S, (1964) Nat Cancer Inst Monogr, 13: 13-27.  
Toyoda H, et al. (1995) J Biol Chem, 270: 7495-500.  
Carpenter G, et al. (1978) Nature,276: 409-10.

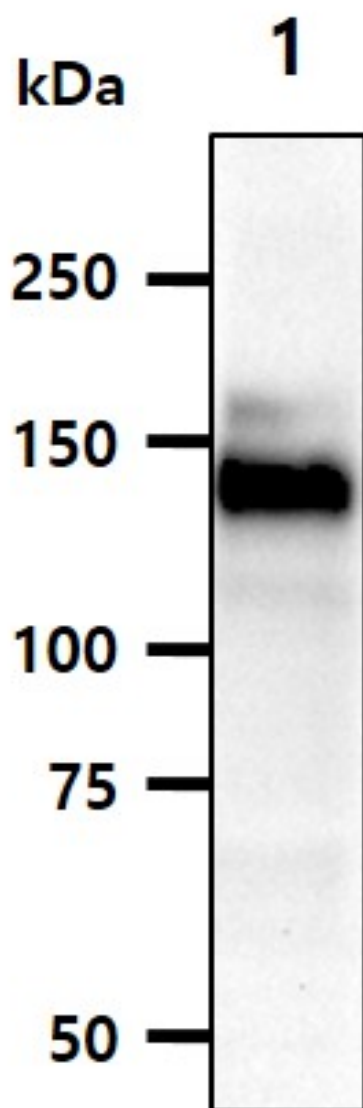
## DATA

---

### Western blot analysis (WB)

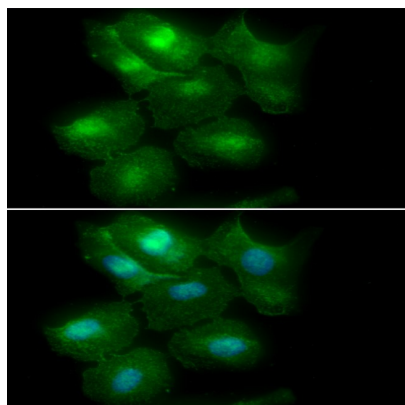
## Human EGFR antibody

Catalog Number: ATGA0197



The cell lysate(40ug) was resolved by SDS-PAGE, transferred to PVDF membrane and probed with anti-human EGFR antibody (1:1000). Proteins were visualized using a goat anti-mouse secondary antibody conjugated to HRP and an ECL detection system.  
Lane .: A431 cell lysate

### Immunocytochemistry/Immunofluorescence (ICC/IF)



ICC/IF analysis of EGFR in HeLa cells. The cell was stained with ATGA0197 (1:100). The secondary antibody (green) was used Alexa Fluor 488. DAPI was stained the cell nucleus (blue).