

Human NELL2 antibody

Catalog Number: ATGA0198

PRODUCT INFORMATION

Catalog number

ATGA0198

Clone No.

AT13E7

Product type

Monoclonal Antibody

UnitProt No.

Q99435

NCBI Accession No.

NP_006150

Alternative Names

Mel91, MEL91 protein, NEL-like protein 2, Nel-related protein 2, NRP2, Protein kinase C-binding protein NELL2

PRODUCT SPECIFICATION

Antibody Host

Mouse

Reacts With

Human

Concentration

1mg/ml (determined by BCA assay)

Formulation

Liquid in. Phosphate-Buffered Saline (pH 7.4) with 0.02% Sodium Azide, 10% glycerol

Immunogen

Recombinant human NELL2 (30-258aa) purified from E. coli

Isotype

IgG2b kappa

Purification Note

By protein-G affinity chromatography

Application

ELISA, WB

Usage

The antibody has been tested by ELISA and Western blot analysis to assure specificity and reactivity. Since application varies, however, each investigation should be titrated by the reagent to obtain optimal results. Recommended dilution range for Western blot analysis is 1:500. Recommended starting dilution is 1:500

Human NELL2 antibody

Catalog Number: ATGA0198

Storage

Can be stored at +2C to +8C for 1 week. For long term storage, aliquot and store at -20C to -80C. Avoid repeated freezing and thawing cycles.

BACKGROUND

Description

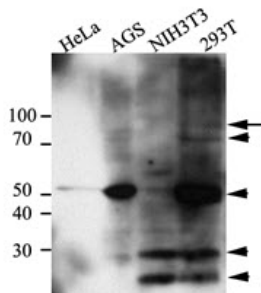
Protein kinase C-binding protein, NELL2 is expressed abundantly in neural tissues and may play important roles in the development of neural tissues. Also, NELL protein contains six epidermal growth factor (EGF) -like repeat domains that participate in calcium binding.

General References

- Kuroda S, et al. (1999) *Biochem. Biophys. Res. Commun.* 265 (1): 79-86.
- Luce MJ, Burrows PD. (1999) *Gene* 231 (1-2): 121-6.
- Watanabe TK, et al. (1997). *Genomics* 38 (3): 273-6.

DATA

Western blot analysis (WB)



Arrow: NELL2 intact form
Arrow head: NELL2 cleavage form

The cell lysates (40ug) were resolved by SDS-PAGE, transferred to PVDF membrane and probed with anti-human NELL2 (1:500). Proteins were visualized using a goat anti-mouse secondary antibody conjugated to HRP and an ECL detection system.

